

Cine **VERSUM**

RETAIL **PRICE GUIDE**

APRIL 2010



TERMS & CONDITIONS

- Ordering:** All orders subject to these terms and conditions. No additions, deletions or amendments to these terms and conditions will be binding without written approval of StJohn Group, Inc. We will not be held responsible for errors or omissions. Orders are only accepted in writing, either customer Purchase Order (PO) or signed and dated Quote furnished by StJohn Group within the last 30 days.
- Order Acknowledgments:** An e-mailed order acknowledgment is provided to all customers that provide a valid e-mail address. If a valid e-mail address is not provided, an order acknowledgment will be sent via fax and/or postal mail.
- Cancellation:** Cancellations are only permitted on non-custom items, which have not yet been shipped from the factory. Custom orders must be accepted in full. Cancellations will not be accepted.
- Freight:** All shipments are F.O.B. origin and will be insured; product ownership passes to you when it leaves the factory.
- Lead Time:** Inquire at time of order. Allow 2-3 weeks for delivery. Expedited delivery may be available for an additional fee of 25%. Custom products may take as long as 6-8 weeks.
- Returns:** Return Material Authorization (RMA) is required. All returns are subject to a 15% restocking fee to cover for the cost of inspection and repackaging. Shipping charges are non-refundable. When returning products, ship insured and prepaid, using a carrier that has tracking capabilities. The customer assumes responsibility for insuring the return shipment and filing the claim for lost or damaged returns. RMA# must be clearly marked on the outside of the box.
- Changes:** All product, prices, models, terms, and conditions are subject to change without notice. This price list is effective April, 2010 and supersedes any previous price list.
- Export From U.S.A.:** All orders shipped outside the U.S.A. the buyer is responsible for all duties, taxes and processing fees assessed by Customs.
- Quotations & Special Orders:** Quotations are valid for 30 days. Quotations are valid for specifications listed; any omissions or additions will require revisions.
- Payment:** Remit payments to StJohn Group, Inc. Please include our Invoice number on all remittance. We accept Master Card, VISA & American Express, checks, and wire transfers. A \$50 fee will be assessed for all NSF or returned checks.
- Payment Due:** Prepayment is required on all sales. All sales are final. StJohn Group and Cineversum do not offer invoice terms.
- State Sales Tax:** State Sales taxes are levied on all orders. Orders that are tax-exempt for resale will be accepted but not processed until a valid tax certificate is received. Fax, e-mail, or mail the valid certificate to:
- StJohn Group, Inc.
4396 Saddlestone Drive
Bellingham, WA 98226
E-mail: orders@stjohngroup.com
Fax: 360-647-1087
- Warranty:** All products are warranted by Cineversum. Inquire about specific lengths of time for specific products.
- 18 months limited parts & labor on projectors
 - 12 months on electronics
 - 300 hours on bulb

Confidential North American **RETAIL** Price Guide – April 1, 2010
 Prices, availability, and specifications subject to change without notice.
 Prices are in US\$ and FOB Bellingham, WA

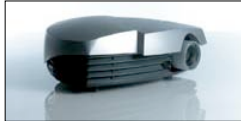
orders@stjohnsgroup.com
 T:360-756-2205 • F:360-647-1087

PROJECTORS

Model category	Part Nr	Product Designation	Retail
----------------	---------	---------------------	--------

Cineversum 60 ST

One Chip DLP 16x9 ED2 chip 1024 x 576
 900 ANSI lumens – 2,000:1 contrast



R9002460	Projector equipped with short throw lens 1.8:1 - 2.25:1	\$3,625
R9852070	250W spare/replacement lamp for CV60/70 series	\$1,170
R9852060	Ceiling mount kit for CV60/70 series	\$875

Cineversum 70 Xtra

One Chip DLP 16x9 DarkChip3 1280 x 720 'HD-ready'
 HDMI 1.2 input – 1200 ANSI lumens – 4,000:1 contrast



R9010091	Projector equipped with short throw lens 1.4-1.8:1	\$6,070
R9010092	Projector equipped with long throw lens 1.8-2.4:1	\$6,070
R9852070	250W spare/replacement lamp for CV60/70 series	\$1,170
R9852060	Ceiling mount kit for CV60/70 series	\$875

BlackWing range

Three Chip LCoS 16x9 1920x1080 'Full-HD', Ultra quiet, HD source optimized; pre-calibrated to D-65, re CIE 709 high def color space
 - **DESIGNER Custom colors available (gloss white, silver, red etc.)**

BlackWing One: Two HDMI 1.3 inputs – 1400 ANSI lumens – 15,000:1 contrast, manual focus and zoom; 1.75-2.53:1 lens; acoustic noise < 20dB; RS232 compatible



R9010096	BlackWing One Projector (1.75-2.53:1 lens); charcoal black, designer case	\$7,745
----------	---	---------



T9003000	Cinemax Kit for BWOne. Includes: Fixed 2.35 High-Contrast Prismatic Lens attached to a dedicated ceiling/table plate. (DOES NOT include ceiling mount). Stretch can be electronically switched with BW One's internal Theatermode software.	\$7,140
----------	--	---------



T9004000	Theatre Concept Kit for BWOne - includes: 2.35 High-Precision Spherical Lens , ultrafast quiet motorized slider commanded via RF handheld remote or 12v to RF emitter on CV's Master 3 processor; unified mount to hold lens to projector. Does not include ceiling mount bracket.	\$12,760
----------	---	----------

Custom Color	Gloss colors available (white, silver, red, etc.) using a high-gloss baked, automotive-type finish.	Add \$1,000
R9852064	Ceiling mount kit for BWOne only	\$1,365
R9852065	Ceiling mount kit for BWOne + Anamorphic Lens kit	\$1,265
R9852075	200W NUP spare/replacement lamp for BWOne, 2000 hour	\$1,315


Confidential North American **RETAIL** Price Guide – April 1, 2010
 Prices, availability, and specifications subject to change without notice.
 Prices are in US\$ and FOB Bellingham, WA

orders@stjohnsgroup.com
 T:360-756-2205 • F:360-647-1087


PROJECTORS

Model category	Part Nr	Product Designation	Retail
----------------	---------	---------------------	--------

BlackWing Two Mk2010 - Two HDMI 1.3 inputs – 1000 ANSI lumens – 32,000:1 contrast, motorized focus and zoom; motorized 1.4-2.8:1 lens; acoustic noise < 19dB; RS232 compatible

	R9010097	BlackWing Two Projector (motorized 1.4-2.8:1 lens); charcoal black, designer case	\$9,250
	Custom Color	Gloss colors (white, silver, red, etc.) available using a high-gloss baked, automotive-type finish.	Add \$1,000
	T9005500	Cinemax PRO Kit for BW Two, Three, and Four - includes: 2.35 anamorphic lens. Does not include ceiling mount bracket.	\$9,825
	R9852066	Ceiling mount kit for BW Two or BW Three	\$1,365
	R9852065	Deluxe Ceiling mount kit for BW Two or Three with Theatre Kit or Cinemax Kit	\$1,265
	R8760002	200W NUP spare/replacement lamp for BWTwo MkII (R9010097) & BWThree MkII (R9010098), & BW Four (R9010099) 2000 hour	\$1,100
	R8760001	200W NUP spare/replacement lamp for BWTwo (R9010086) & BWThree (R9010093), 2000 hour	\$1,100

BlackWing Three Mk2010 - Two HDMI 1.3 inputs – 900 ANSI lumens – 50,000:1 contrast, motorized focus and zoom; motorized 1.4-2.8:1 lens; acoustic noise < 19dB; RS232 compatible

	R9010098	BlackWing Three Projector (motorized 1.4-2.8:1 lens); charcoal black, designer case	\$13,150
	Custom Color	Gloss colors available (white, silver, red, etc.) using a high-gloss baked, automotive-type finish.	Add \$1,000
	T9005500	Cinemax PRO Kit for BW Two, Three, and Four - includes: 2.35 anamorphic lens. Does not include ceiling mount bracket.	\$9,825
	R9852066	Ceiling mount kit for BW Two, Three, or Four	\$1,365
	R9852065	Deluxe Ceiling mount kit for BW Two or Three with Theatre Kit or Cinemax Kit	\$1,265
	R8760002	200W NUP spare/replacement lamp for BWTwo MkII (R9010097) & BWThree MkII (R9010098), & BW Four (R9010099) 2000 hour	\$1,100
	R8760001	200W NUP spare/replacement lamp for BWTwo (R9010086) & BWThree (R9010093), 2000 hour	\$1,100

Confidential North American **RETAIL** Price Guide – April 1, 2010
 Prices, availability, and specifications subject to change without notice.
 Prices are in US\$ and FOB Bellingham, WA

orders@stjohnsgroup.com
 T:360-756-2205 • F:360-647-1087

PROJECTORS

Model category	Part Nr	Product Designation	Retail
----------------	---------	---------------------	--------

BlackWing Four Mk2010: Two HDMI 1.3 inputs – 900 ANSI lumens – 70,000:1 contrast, motorized focus and zoom; motorized 1.4-2.8:1 lens; acoustic noise < 19dB; RS232 compatible



R9010099	BlackWing Four Projector (motorized 1.4-2.8:1 lens); charcoal black, designer case	\$17,325
Custom Color	Gloss colors (white, silver, red, etc.) available using a high-gloss baked, automotive-type finish.	Add \$1,000
R9010099 CARBON	LIMITED EDITION: Faux carbon fiber finish - specify CARBON when ordering	\$17,325
T9005500	Cinemax PRO Kit for BW Two, Three, and Four - includes: 2.35 anamorphic lens. Does not include ceiling mount bracket.	\$9,825
R9852066	Ceiling mount kit for BW Two, Three, or Four	\$1,365
R8760002	200W NUP spare/replacement lamp for BWTwo MkII (R9010097) & BWThree MkII (R9010098), & BW Four (R9010099) 2000 hour	\$1,100

BlackWing LT (Long Throw): 1920 x 1080; DVI input – 900 ANSI lumens – 3,500:1 contrast / comes with Master3 Theater video-processor, motorized focus and zoom

Price Reduced!
Limited Quantities Available



R9010085	Blackwing LT Projector (motorized 2.0-3.8:1 lens); INCLUDES Master 3 Theater external video-processor	\$20,555
R9852061	Ceiling mount kit for BW LT	\$500
R7840015	200W NUP spare/replacement lamp for BW LT	\$1,465

Confidential North American **RETAIL** Price Guide – April 1, 2010
 Prices, availability, and specifications subject to change without notice.
 Prices are in US\$ and FOB Bellingham, WA

orders@stjohnsgroup.com
 T:360-756-2205 • F:360-647-1087

PROJECTORS

Model category	Part Nr	Product Designation	Retail
----------------	---------	---------------------	--------

Cineversum 110 range

Three Chip DLP 16x9 DarkChip2 1280x720

Powered by BARCO – dual-lamp 250 W UHP – 1500 or 3000 ANSI lumens – 2,500:1 contrast

Recommended for wide screens installation or ambient light environments



R9010120	CV110 Projector (without lens – DVI, PC)	\$19,715
S9001030	Master2 video-processor (adds 4x HDMI inputs)	\$3,585
R9842330	Ceiling mount kit for CV110	\$1,395
R9841880	Spare dual-lamp for CV110/CV120	\$3,615

Lenses for Cineversum 110

Standard quality lens – motorized



R9842342	1.20 to 1.44:1 lens	\$4,440
R9842343	1.44 to 1.80:1 lens	\$4,440
R9842344	1.80 to 2.40:1 lens	\$4,440
R9842345	2.40 to .360:1 lens	\$4,440
R9842346	3.60 to 5.60:1 lens	\$4,440

High quality Barco lens (fine large aperture, doubles contrast) – motorized



R9842060	1.60 to 2.00:1 TLD lens	\$9,365
R9842349	2.80 to 5.00:1 TLD lens	\$9,365
R9842120	5.00 to 8.00:1 TLD lens	\$9,365

Confidential North American **RETAIL** Price Guide – April 1, 2010
 Prices, availability, and specifications subject to change without notice.
 Prices are in US\$ and FOB Bellingham, WA

orders@stjohnsgroup.com
 T:360-756-2205 • F:360-647-1087

PROJECTORS

Page 7

Model category	Part Nr	Product Designation	Retail
----------------	---------	---------------------	--------

FORCE ONE

Ultra High brightness, high definition, high contrast DLP projector for XXL screens



R9002428	DLP 3-chip 1920 x 1080. Requires Lens Option; Includes : Dual Lamp 200W (up to 6000 ANSI lumens); 1x Analog Input (5 BNC accepting RGBHV, YPbPr); 1x DVI (HDCP) input + 1x Dsub15 VGA input	\$95,000
----------	---	----------

Lenses for FORCE ONE

Absolute HD lens – Non-motorized



R9841110	0.67:1 (fixed lens)	\$17,350
R9841117	1.1:1 (fixed lens)	\$17,350

Absolute HD lens – Motorized

R9841111	1.16 to 1.49:1	\$19,000
R9841112	1.4 to 1.8:1	\$15,225
R9841113	1.8 to 2.6:1	\$15,225
R9841114	2.6 to 4.1:1	\$15,225
R9841115	4.1 to 6.9:1	\$15,225
R9841116	6.9 to 10.4:1	\$15,225

Options for FORCE ONE



R9800108	Ceiling Mount	\$2,150
R9800109	Extension for Ceiling Mount	TBA
R9800104	Spare Lamp	\$1,925
R1018309	Analog Input	\$925
R1018312	Dual Link DVI Input	\$1,115
R1018310	Video Decoder Input	\$1,115
R1018313	Dual SD/HD SDI input	\$3,785
R1018311	Twin HDMI input	\$1,235
R1018313	Dust Filter	\$190

CRT range

High brightness, high definition liquid cooled electromagnetic focus CRTs

Extremely High Resolution; Automatic Convergence and Geometry - Built-in Iris3 automatic alignment system aligns on-screen convergence and geometry in less than 2.5 minutes.

Cine 8 Series



R9002428	Cine 8 Limited Edition: up to 1,600 by 1,200 px; ideally suited for high resolution applications such as CAD/CAM, process control, command and control management centers and simulation; includes external scaler	\$25,500
R9040005	Cine 8 Digital: up to up to 2,000 by 1,750 pix; New, ultrahigh-definition, LC gun 8" electromagnetic focus CRTs with digitally controlled dynamic astigmatism guarantee razor sharp images; Includes high-quality Line Multiplier (Limo Pro) for improved video image quality.	\$37,700

Cine 9 - The first and only CRT projector ever combining analog 9" CRT technology with digital image adjustments through unique and Barco patented alignment circuits for focus, convergence, geometry and astigmatism. Combining the best of both the analog and digital worlds results in an unseen display resolution of 2000 TV lines or 2500 x 2000 pixels, together with a unrivaled RGB amplifier bandwidth of 180 MHz.



R9010070	Cine 9: Unlike competitive projectors, this Cine9 is not only designed to accommodate all analog video source, it also displays all currently proposed HDTV, extended or improved TV standards in either 4:3 or 16:9 aspect ratio format, as well as computer data; Includes high-quality Line Multiplier (Limo Pro) for improved video image quality.	\$62,550
----------	---	----------

Confidential North American **RETAIL** Price Guide – April 1, 2010
 Prices, availability, and specifications subject to change without notice.
 Prices are in US\$ and FOB Bellingham, WA

orders@stjohnsgroup.com
 T:360-756-2205 • F:360-647-1087

VIDEO PROCESSORS

Model category	Part Nr	Product Designation	Retail
----------------	---------	---------------------	--------

CV Master range external 10 bit-high def scaler/processors

Increased source management, professional signal adjustments, VRS video processing, film grade de-interlacing, game modes, lip-sync correction, and more

Master Two : For the CV 110 or CRT Cineversum projectors ONLY

Master Three 'Theatre' : Master Three with 12v output trigger and Cineversum Theatre mode



S9001030	CV Master Two video-processor (adds 4x HDMI inputs) - Video-processor for the CV110 and Cine CRT projectors	\$3,585
S9001055	CV Master Three 'Theatre' - Master3 scaler with 12v trigger and "theatre mode"	\$5,275

Accessories for CV Master



S7011030	SD-SDI input for CV Masters Two & Three	\$635
S7051050	12v trigger board for Master Three	\$580
S9001055	Precision De-interlacing Card (Only for Master Two)	\$670

CONNECTION CABLES

HDMI 1.3 – 1080p-24 – Gold plated connected – 4-layer shield



H2001105	5 meters HDMI-HDMI cable	\$650
H2001110	10 meters HDMI-HDMI cable	\$920
H2001200	HDMI repeater – self powered	\$760