

crystalio[®]

Video Processor/Scaler VPS 2300

Crystalio[®] is the **ONLY** video processor/scaler at this price point to have

SDI, DVI, RGBS, RGsB inputs

DVI, RGBHV/Component outputs

User-customizable output resolutions

DCDi[™] and TrueLife[™] by Faroudja[®]

Pixel Magic System[™] by PMS Video Ltd.

and more...

www.crystalio.com



Powered by PMS Video Ltd.

DCDi[®]
by FAROUDJA

SDI
Serial Digital Interface

**Pixel
Magic**

crystalio® Video Processor/Scaler VPS 2300

The ONLY Video Processor/Scaler at this price point to have the following features and technologies

Crystalio® combines state-of-the-art digital video transmission, processing, scaling and format conversion technologies in a single box and delivers unprecedented high quality video in home theaters at an attractive price.



Technologies:

Pixel Magic System™

Pixel Magic System™ is a set of tools for users to configure the video output of Crystalio, ensuring that it is mapped to digital output devices in Pixel Perfect mode.

Without Pixel Magic System™, a video processor cannot ensure it can map to digital displays pixel by pixel to produce crystal clear image even if it can output the native resolution of the display device. This is because whether pixel clock



Pixel Magic

DCDi™

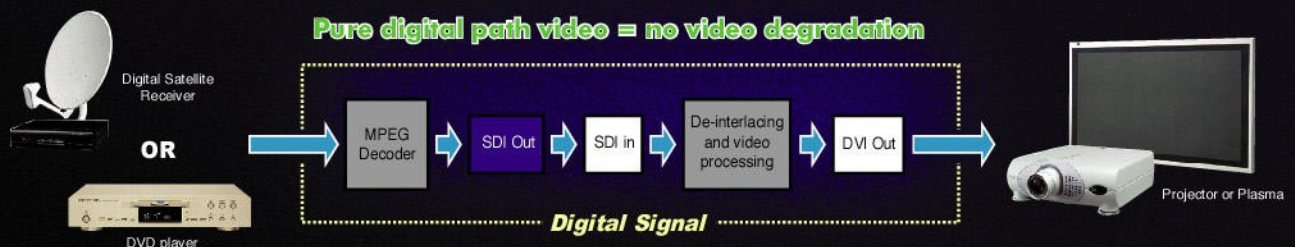
Video material is analyzed at single pixel granularity to detect the presence or absence of angled lines and edges, which are then processed to produce a smooth and natural looking image without visible artifacts or "jaggies". DCDi eliminates jagged edges normally seen on angled lines in motion video, creating smooth and natural-looking images.



DCDi™
by FAROUDJA

SDI-input

SDI (Serial Digital Interface) is an established standard that has been used by the professional broadcast industry for a long time. Crystalio® has 3 SDI inputs as standard which allow zero picture quality loss as the video is transported from SDI-equipped DVD players/set-top-boxes to the video scaler/processor. Moreover SDI signals can be transmitted over long distances without loss of quality, allowing increased installation flexibility.



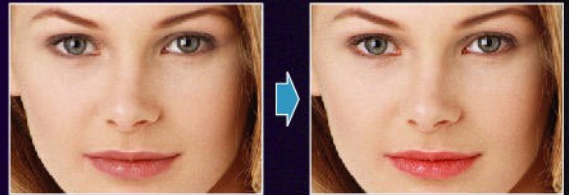


DVI

The DVI (Digital Visual Interface) output of Crystalio[®] plus the SDI input represents a full-digital signal path from the video source to the digital display devices without any signal degradation caused by unnecessary digital-to-analog or analog-to-digital conversion.

TrueLife™

TrueLife™ enhancement uses non-linear algorithms to enhance the small details and colors in images, and improve depth perception by sharpening large edges without introducing visual artifacts or distortion. The overall result is a richer, more pleasing, high-definition-like picture.



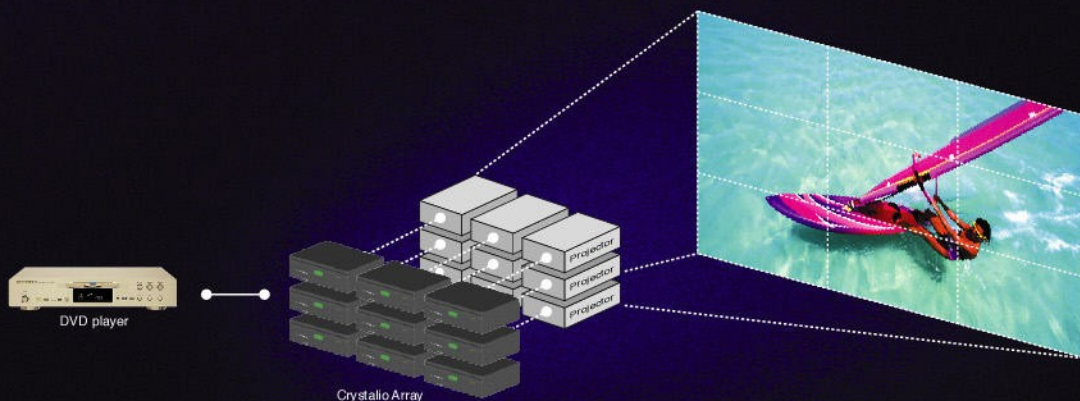
UltraAR™

Crystalio[®] supports virtually any video image aspect ratio and display devices aspect ratio including, but not limited to, video images ranging from 4:3, 16:9, 16:9 letter box, to 2.35:1 anamorphic; and display device aspect ratio from 4:3, 16:10, 16:9, to 2.35:1. For example, a 2.35:1 anamorphic DVD video source can be shown on a 2.35:1 projection screen with the top and bottom black bars cropped.



CrystalWall™

Crystalio's large zoom function can enlarge the image by up to 10 times the screen height. With an array of Crystalios, a Video Wall of up to 10 screens wide by 10 screens high can be produced.



crystalio[®] Video Processor/Scaler VPS 2300

Features:

- Three SDI (Serial Digital Interface) inputs
- Digital DVI and analog RGBHV/YCrCb outputs
- Directional Correlation Deinterlacing (DCDi[™]) for optimal deinterlacing of original video material*
- All standard TV output format supported, including 480p, 540p, 576p, 720p, 1080i, 1080p and many more
- Advanced 6-tap, 64-phase scaler / upconverter to offer top-notch scaling capability
- Full manual control of deinterlacing algorithms for advanced users
- Preset digital timings of popular digital display devices
- User-customizable output resolution to match your own display devices
- Tearless frame rate conversion, 50/60/72/75/100/120Hz
- Edit correction - film content is continuously monitored for any break in sequence caused by "bad edits" and quickly compensates for the most effective reduction in artifacts*
- TrueLife[™] enhancer brings out details in the picture and produces a more life-like image
- Pixel Magic System[™] to help users set Crystalio[®] output resolution to various display devices in pixel perfect mode
- UltraAR[™] supports virtually any Video Image aspect ratio from 0.75:1 to 4.00:1, and Display Device aspect ratio from 1:1 to 3:1
- Ten user-customizable independent profiles for each input
- Motion Adaptive Noise Reduction to improve picture quality for analog inputs
- Chroma filter to mask the chroma-bug of MPEG decoders
- Adaptive comb filter for excellent chrominance/luminance separation and reduced cross color and cross luminance artifacts
- Real-time status information display on LCD panel including source, video format, output resolution, deinterlacing, aspect ratio, zoom, and more
- Non-linear stretching to display 4:3 material on 16:9 displays
- Film Mode Processing for proper de-interlacing of 3:2 and 2:2 pulldown material*
- HDTV upconversion, scaling and frame-doubling
- Brightness, Contrast and Saturation control
- R, G, B offset individual control
- Various Zoom controls including "Best Fit", "Full Width", "Full Height", and customization from 0.5 to 10 times screen height
- User-friendly user interface and remote control
- Firmware upgradeable through built-in Ethernet and USB ports

Video Inputs

- SDI (Serial Digital Interface) input x 3
- Component/RGBS/RGsb input x 2
- Composite Video Input x 2 (also used as sync for RGBS)
- S-Video input x 2
- HDTV analog input x 1
- DVI input (HDCP Upgradeable) x 1

Video Outputs:

- Digital: DVI
- Analog: RGBHV or component video

User-friendly appliance

- Infrared remote control and LCD/LED on front panel

Dimensions: 438 x 322 x 88 mm / 17.2in x 12.7in x 3.5in

Weight: 7Kg / 15.5Lbs

Power: 110/220V AC user selectable, 35W

Regulatory Approval: CE, UL, FCC

Rack mounting brackets included.

Front Panel:



Connector Panel:



* For standard definition video only

Specifications and features subject to change without notice.

DCDi[®] by Faroudja and TrueLife[™] are registered trademarks of Genesis Microchip. Pixel Magic System[™], UltraAR[™] and CrystalWall[™] are trademarks of PMS Video Ltd. All rights reserved.

Disclaimer: Any opinions, findings, conclusions or recommendations expressed in this material/event (or by members of PMS Video Ltd.) do not reflect the views of the Government of the Hong Kong Special Administrative Region or the Innovation and Technology

PMS Video Ltd.

Unit 111, Innovation Centre, No. 6 Science Park West Avenue,
Hong Kong Science Park, Pak Shek Kok, Hong Kong

Phone: +852 2607 4055
Email: info@pmsvideo.com

Fax: +852 3186-2352
www.crystalio.com

Acknowledgement:

PMS AV Solutions

π

Innovation and
Technology Commission

The Government of the Hong Kong SAR