

VDCDS Technical Field Bulletin

To: Dealers/Manual Subscribers

Date: 11/20/02

VDCDS Ref No.: 3234

VDCDS Model: All MARQUEE™ Series using Video Input Modules 02-270335-02P through 05P

Subject: Remove faint vertical line near right edge of image with dark images viewed in very dark environments.

Corrective Action: Add three resistors per rework instructions

PARTS REQUIRED

VDCDS Part Number	Description	Qty	Circuit Symbol
20151	Resistor, MF 1.5MΩ 1/8w	3	R1007, R1008, R1009

TOOLS / MATERIALS REQUIRED (not provided)

Solder	Soldering Iron	Wick/De-soldering tool
Needle-nose pliers	Teflon sleeve (1")	



CAUTION: Always observe Electrostatic Discharge precautions and procedures!

Rework Instruction:

- Step 1. On the component side of the PCB (top-side), Install R1008 1.5MΩ 1/8w from C51 to feed thru below XB15, sleeve exposed lead as shown in Photo 1.
- Step 2. On the printed-side of the PCB (bottom-side), install R1007 1.5MΩ 1/8w (to left) from feed thru to U15 pin 9 to feed thru used by R1008 to XB15, R1009 1.5MΩ 1/8w (to right) from feed thru from U15 pin 2 to same feed thru as R1007, R1008, with sleeving as shown Photo 2.

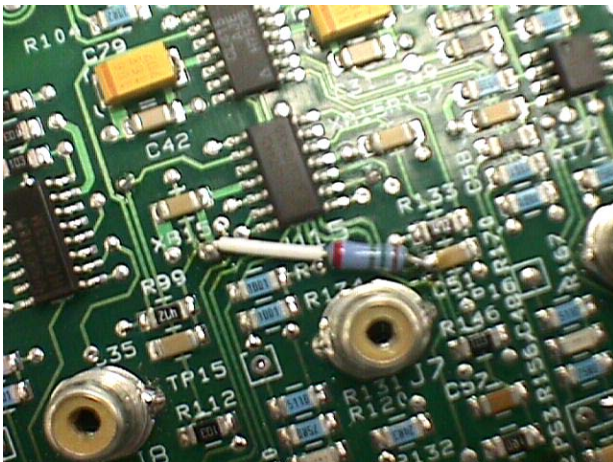


Photo 1.

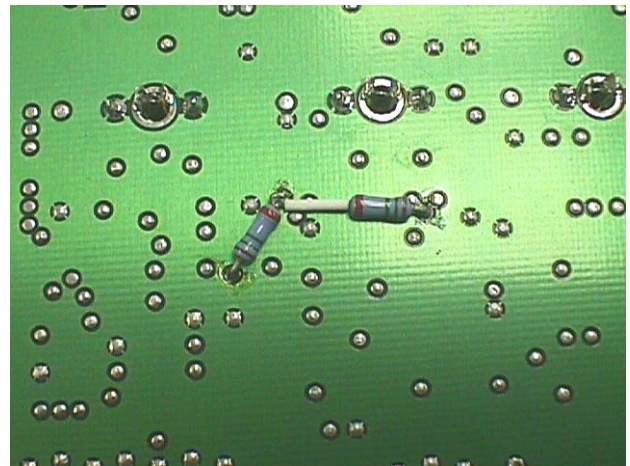


Photo 2.