

# Service Manual

Color Video/Data Projector

**PT-105****chassis No. Q10****Supplement - 3**

Subject: Change of parts list, circuit boards, schematic diagram and adjustments.

Please file and use this supplement manual together with the service manual for Model No. PT-105, Order No. VED88030080C1, the supplement manual (Supplement-1) for Model No. PT-105, Order No. VED88070089S1 and the supplement manual (Supplement-2) for Model No. PT-105, Order No. VED88090090S1.

REASON : Improvement of performance.

**CHANGE OF PARTS LIST** (for supplement-1 and supplement-2)**Important Safety Notice**

Components identified by the International symbol  $\Delta$  have special characteristics important for safety. When replacing any of these components use only manufacturer's specified parts.

Ref. No.	Part No.		Description			
	OLD	NEW				
R322	ERJ8GCYJ821	ERJ8GCYJ471	M	470 OHM	J	1/8W
R347	ERD25TJ471	ERJ8GCYJ391	M	390 OHM	J	1/8W
R375	ERJ8GCYJ821	ERJ8GCYJ471	M	470 OHM	J	1/8W
R402	ERD25TJ471	ERJ8GCYJ331	M	330 OHM	J	1/8W
R431	ERJ8GCYJ821	ERJ8GCYJ471	M	470 OHM	J	1/8W
R459	ERD25TJ391	ERJ8GCYJ221	M	220 OHM	J	1/8W
R751	————	ERJ8GCYJ102	M	1K OHM	J	1/8W
R932	————	ERD25TJ102	C	1K OHM	J	1/4W
R1239	————	ERJ8GCYJ101	M	100 OHM	J	1/8W
R5041	ERD25FJ220	ERD25FJ390K	C	39 OHM	J	1/4W
R5061	ERJ8GCYJ473	ERJ8GCYJ184	M	180K OHM	J	1/8W
R5063	ERJ8GCYJ562	ERJ8GCYJ122	M	1.2K OHM	J	1/8W
R5065	ERJ8GCYJ273	ERJ8GCYJ153	M	15K OHM	J	1/8W
R5115	ERJ8GCYJ183	ERJ8GCYJ153	M	15K OHM	J	1/8W
R5140	ERJ8GCYJ682	ERJ8GCYJ152	M	1.5K OHM	J	1/8W
R5141	ERJ8GCYJ682	ERJ8GCYJ152	M	1.5K OHM	J	1/8W
R5156	ERJ8GCYJ222	ERJ8GCYJ562	M	5.6K OHM	J	1/8W
R5157	ERJ8GCYJ472	ERJ8GCYJ153	M	15K OHM	J	1/8W
R6030	ERJ8GCYJ152	ERJ8GCYJ222	M	2.2K OHM	J	1/8W
$\Delta$ R6073	ERG1SJ393P	ERG2SJ393	M	39K OHM	J	2W
R6138	————	ERDS1TJ682	C	6.8K OHM	J	1/2W
R6139	————	ERJ8GCYJ103	M	10K OHM	J	1/8W
R6140	————	ERJ8GCYJ222	M	2.2K OHM	J	1/8W
R6141	————	ERJ8GCYJ272	M	2.7K OHM	J	1/8W
R6142	————	ERJ8GCYJ103	M	10K OHM	J	1/8W
R6143	————	ERJ8GCYJ103	M	10K OHM	J	1/8W
R6144	————	ERJ8GCYJ221	M	220 OHM	J	1/8W
R6145	————	ERJ8GCYJ681	M	680 OHM	J	1/8W
R6146	————	ERJ8GCYJ473	M	47K OHM	J	1/8W
R6147	————	ERJ8GCYJ473	M	47K OHM	J	1/8W

© Matsushita Electric Industrial Co. Ltd.  
All rights reserved. Unauthorized copying and distribution is a violation of law.

**Panasonic**

Panasonic Communications  
& Systems Company  
Division of Matsushita Electric  
Corporation of America  
50 Meadowland Parkway, Secaucus,  
New Jersey 07094

Matsushita Electric  
of Canada Limited  
5770 Ambler Drive, Mississauga,  
Ontario, L4W2T3

Panasonic Sales Company,  
Division of Matsushita Electric  
of Puerto Rico, Inc.  
San Gabriel Industrial Park  
65th Infantry Ave., Km. 9.5  
Carolina, P.R. 00630

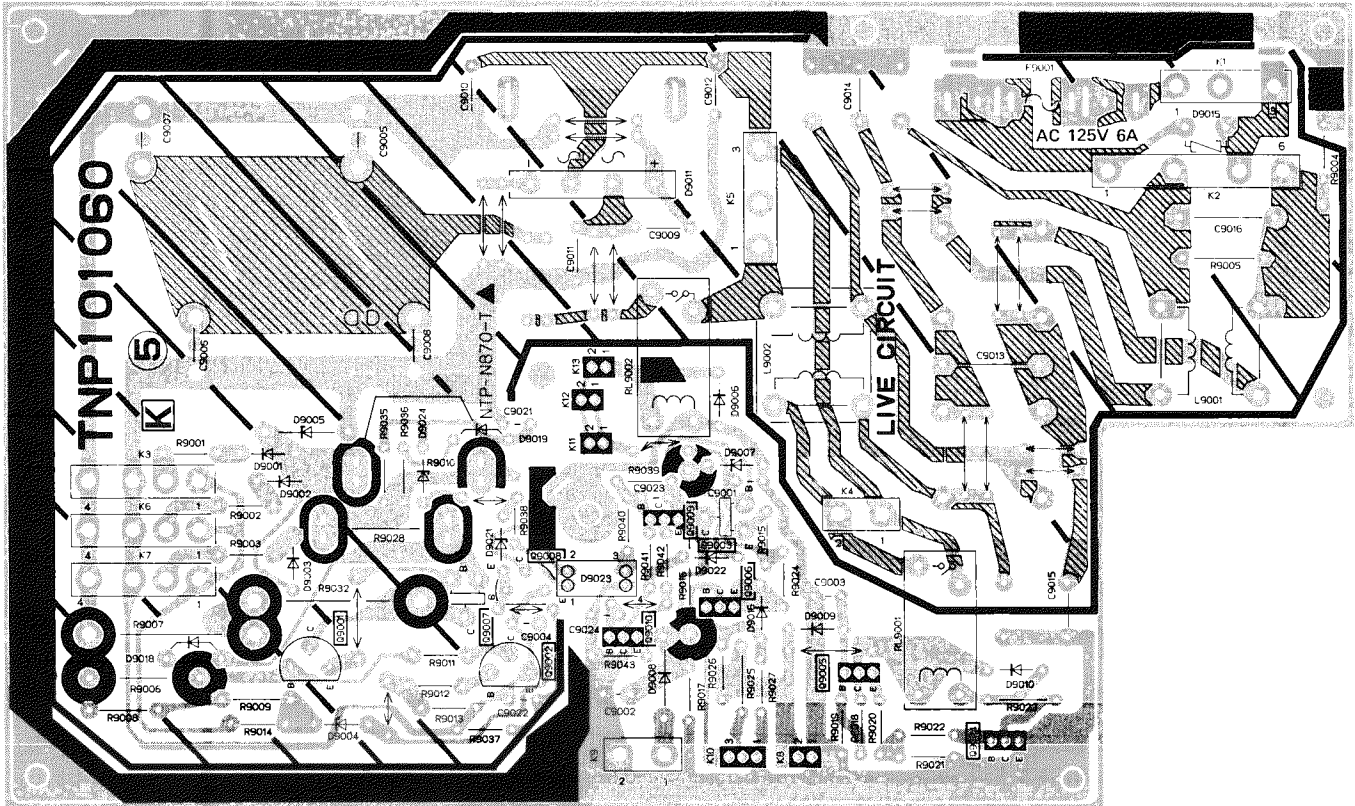
Ref. No.	Part No.		Description			
	OLD	NEW				
R6148		ERJ8GCYOR00	M	0 OHM	J	1/8W
R9001	ERD25TJ221	ERDS1FJ470	C	47 OHM	J	1/2W
R9002	ERD25TJ221	ERDS1FJ470	C	47 OHM	J	1/2W
R9003	ERD25TJ221	ERDS1FJ470	C	47 OHM	J	1/2W
△ R9007	ERG3SJ102H	ERF5AJ222	W	2.2K OHM	J	5W
R9010	ERG3SJ682H	ERF5AJ332	W	3.3K OHM	J	5W
R9012	ERD25TJ392	ERD25TJ152	C	1.5K OHM	J	1/4W
R9013	ERD25TJ472	ERD25TJ102	C	1K OHM	J	1/4W
R9016	ERG1SJ331P	ERG3ANJ331H	M	330 OHM	J	3W
R9028	ERG3SJ682H	ERF5AJ332	W	3.3K OHM	J	5W
△ R9032		ERF5AJ222	W	2.2K OHM	J	5W
R9035		ERD25TJ104	C	100K OHM	J	1/4W
R9036		ERD25TJ103	C	10K OHM	J	1/4W
R9037		ERD25TJ103	C	10K OHM	J	1/4W
R9038		ERG1SJ103P	M	10K OHM	J	1W
R9039		ERD25TJ102	C	1K OHM	J	1/4W
R9040		ERD25TJ392	C	3.9K OHM	J	1/4W
R9041		ERD25TJ392	C	3.9K OHM	J	1/4W
R9042		ERD25TJ472	C	4.7K OHM	J	1/4W
R9043		ERD25TJ222	C	2.2K OHM	J	1/4W
C306	ECEA1HNR47S	ECQV1H394JZ	P	0.39 UF	J	50V
C326	ECEA1HNR47S	ECQV1H394JZ	P	0.39 UF	J	50V
C347	ECEA1HNR47S	ECQV1H394JZ	P	0.39 UF	J	50V
C517	ECQV1H394JZ	ECQM1H334JZ	P	0.33 UF	J	50V
C1029	ECEA1CU470	ECEA1AN470S	E	47 UF		10V
C1030	ECEA1CU470	ECEA1AN470S	E	47 UF		10V
C1066		ECUX1H151KBM	C	150 PF	K	50V
C4212	ECUX1H330JCM	ECUX1H390JCM	C	39 PF	J	50V
C4279	ECUX1H472KBM	ECUX1H182KBM	C	1800 PF	K	50V
C5035	ECQP1471JZ	ECQP1151JZ	P	150 PF	J	100V
C5071	ECUX1H103KBM					
C6062		ECEA1HU010	E	1 UF		50V
C6063		ECEA1CU101	E	100 UF		16V
C6064		ECEA1CU101	E	100 UF		16V
C9004	ECKF1H472KB	ECQM1H104KV	P	0.1 UF	K	50V
C9021		ECEA1HU470	E	47 UF		50V
C9022		ECEA0JU470	E	47 UF		6.3V
C9023		ECEA1HGE2R2	E	2.2 UF		50V
C9024		ECEA1HU010	E	1 UF		50V
L4215	TLQ082J205C	TLT082K991K		PEAKING COIL		8.2U
D536		MA151K		DIODE		
D6041		MA151K		DIODE		
D6042		MA151K		DIODE		
D6043		MA151K		DIODE		
△ D6044		MA151A		DIODE		
D6037	MA150	TVSB84009		DIODE		
D9004	TVSQA209C	MA1100H		ZENER DIODE		
D9005	TVSEQB01-11	TVSQB113		DIODE		
△ D9018		MA161		DIODE		
D9019		TVSEM1Z		DIODE		
D9021		MA1240H		ZENER DIODE		
D9022		MA170		DIODE		
D9023		ON3105		PHOTO ISOLATOR		
D9024		MA1240H		ZENER DIODE		
Q6041		2SC1573R		TRANSISTOR		
Q6042		2SB709R		TRANSISTOR		
Q6043		2SD709R		TRANSISTOR		
Q9007		2SC3169LB		TRANSISTOR		
Q9008		2SC1573R		TRANSISTOR		
Q9009		2SB642		TRANSISTOR		
Q9010		2SD639		TRANSISTOR		
K23	TKG139974	TKG139974-1		LENS		
K44	TNX13013	TNX13013-1		H.V. DISTRIBUTER		

Ref. No.	Part No.		Description
	OLD	NEW	
NLA	TNP100750	<b>TNP100750AZ</b>	CIRCUIT BOARD DF
TM4001	TNQ124		
K71	XTN4+45B	XSB4+8FC	SCREW

## ■ CHANGE OF CIRCUIT BOARDS (for original manual)

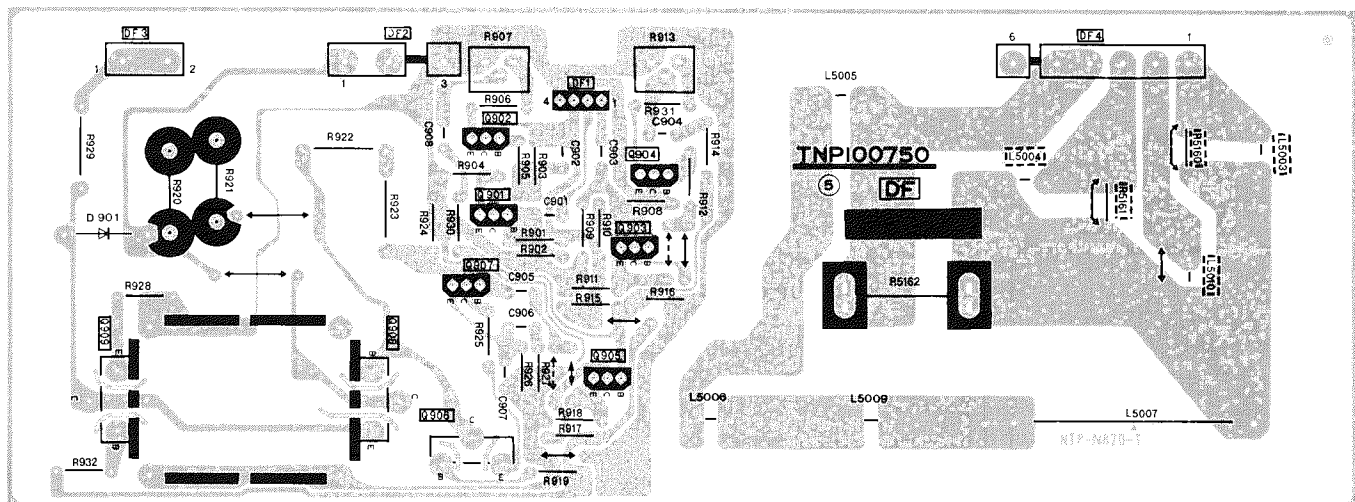
- For K/DF/E-Boards, refer to this supplement manual only.
- On page 86.

### K-BOARD TNP101060



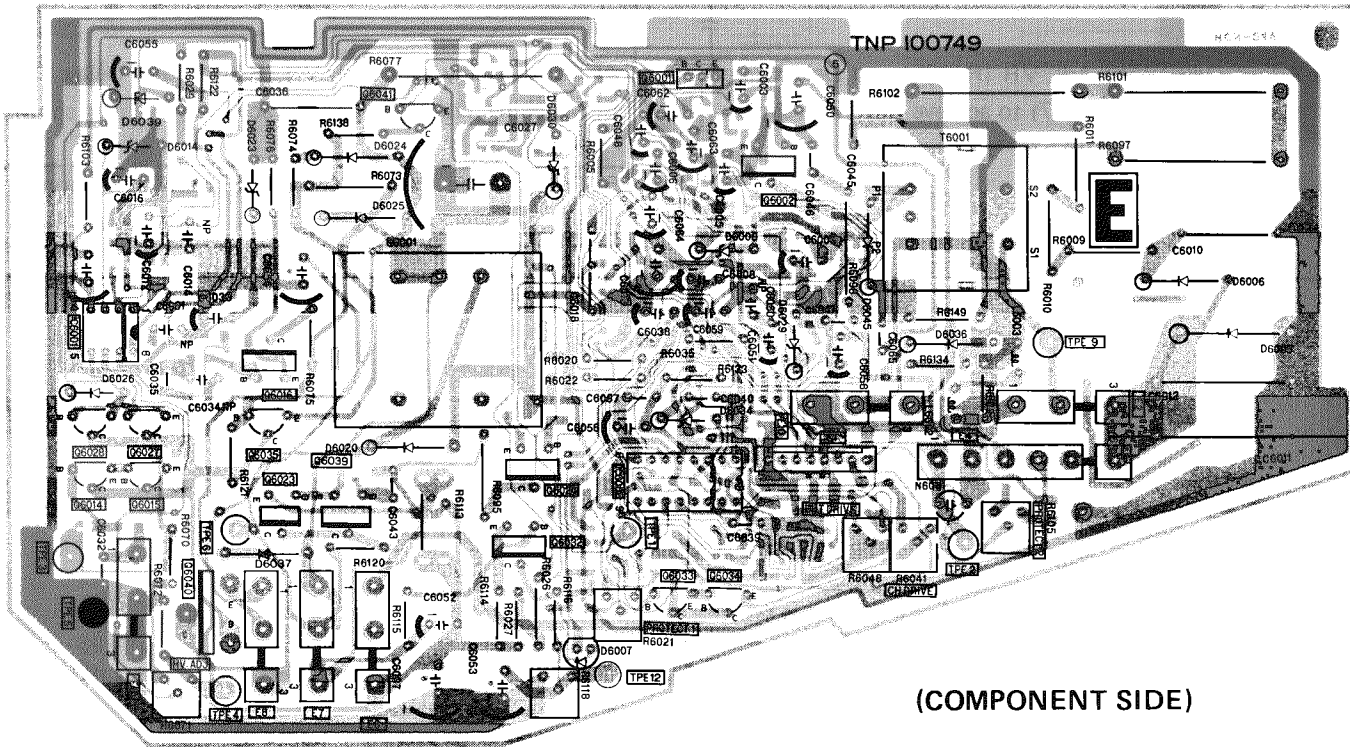
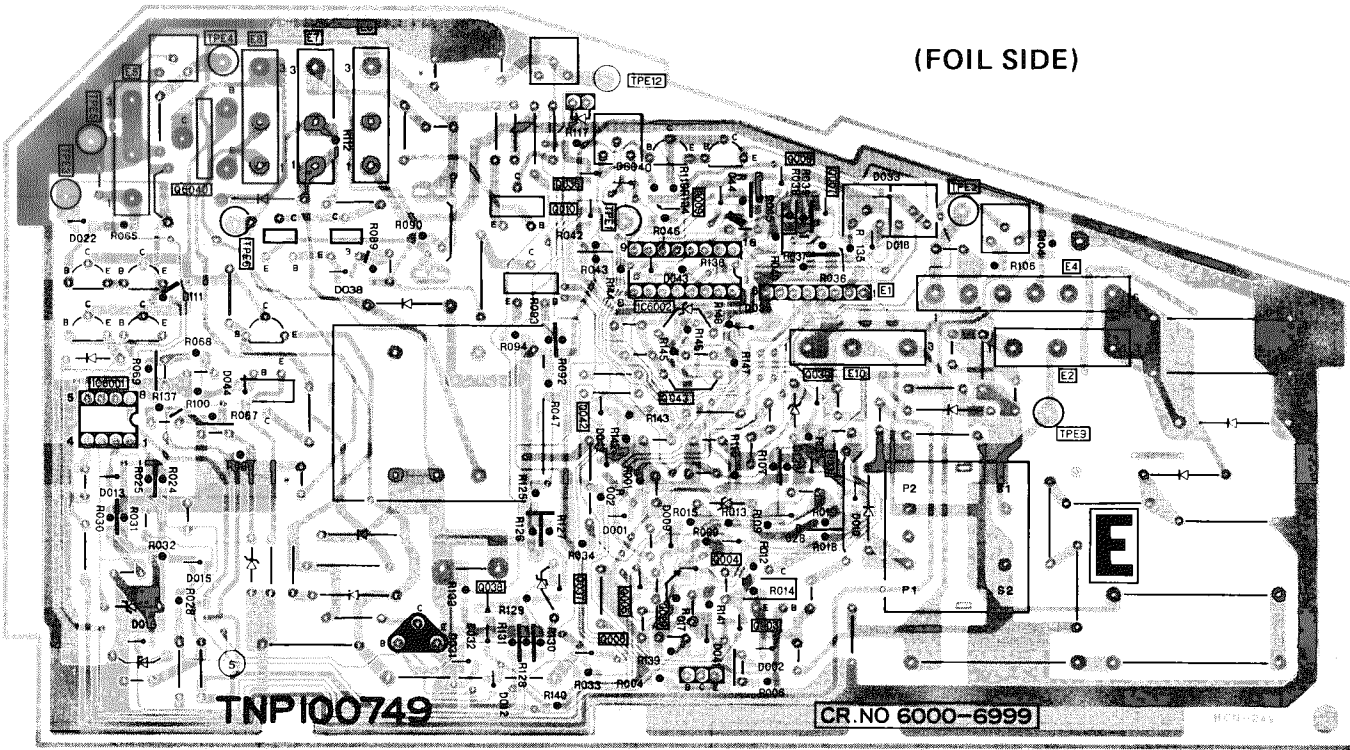
- On page 86

### DF-BOARD TNP100750AZ



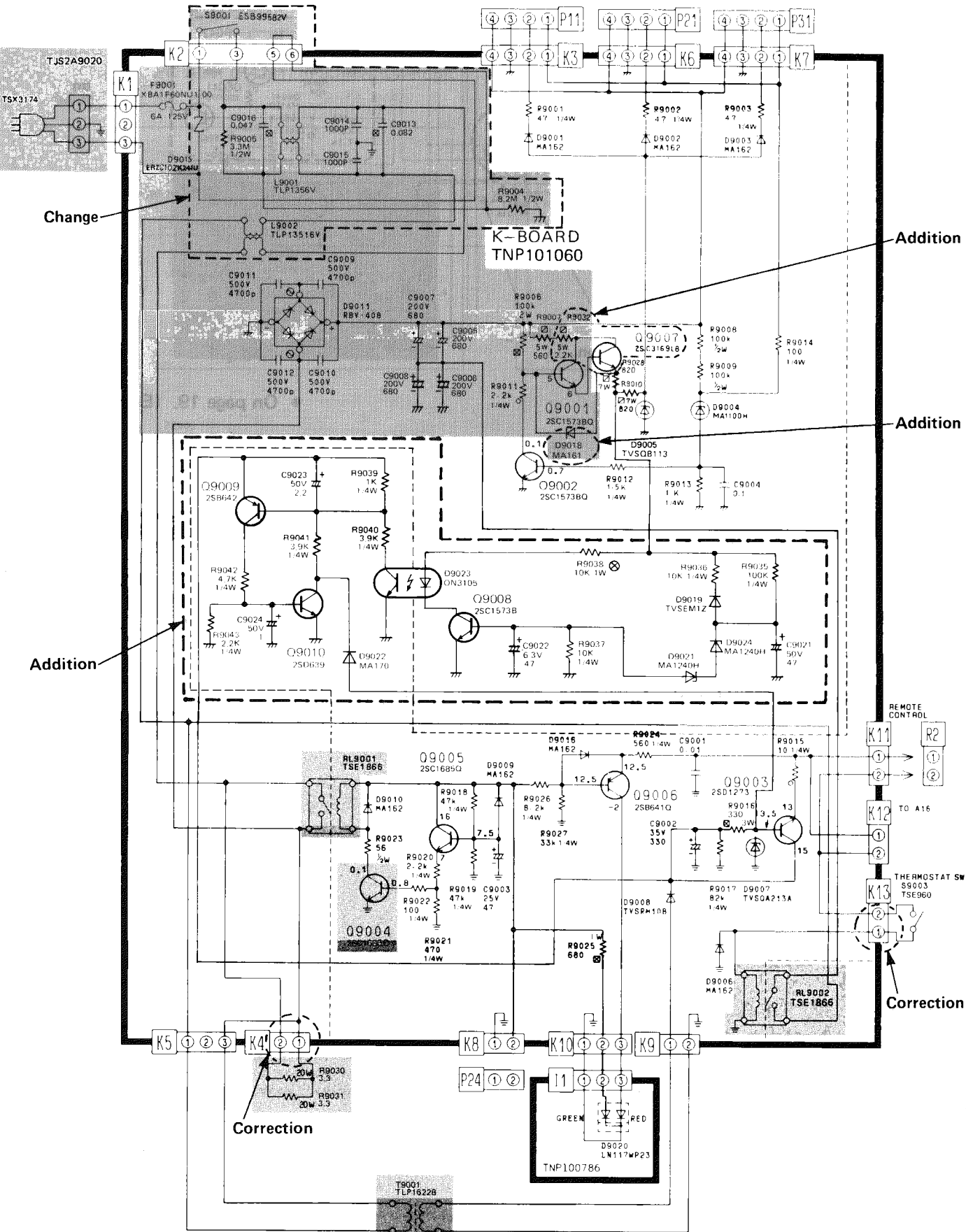
• On Page 70

E-BOARD TNP100749 REF NO. 6000 SERIES (R106 → R6106)



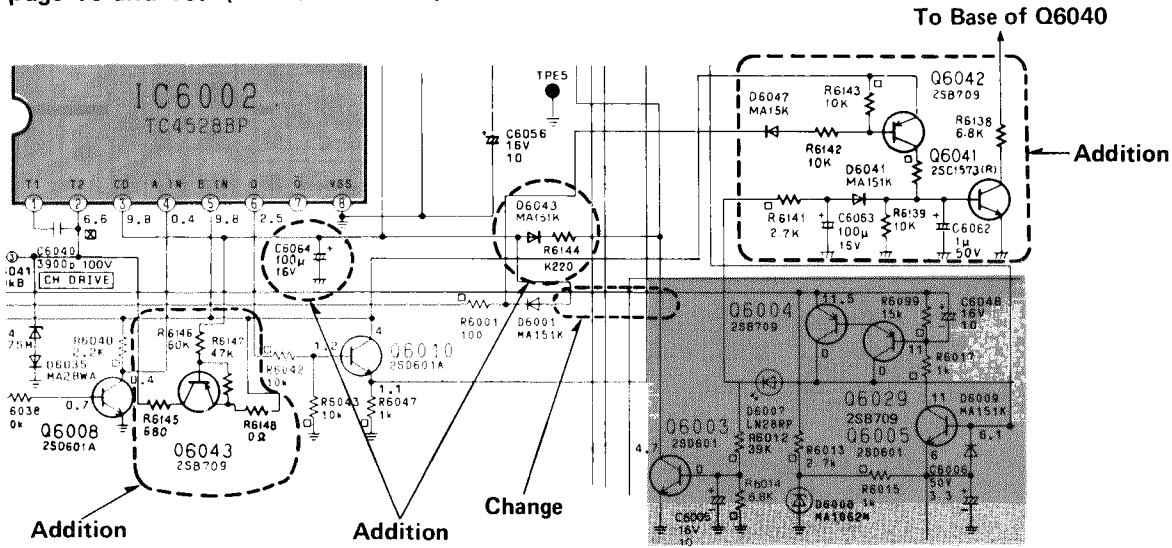
# CHANGE OF SCHEMATIC DIAGRAM (for supplement-1)

- For K-Board section, refer to this supplement manual only.
- On page 17. (K-Board section)

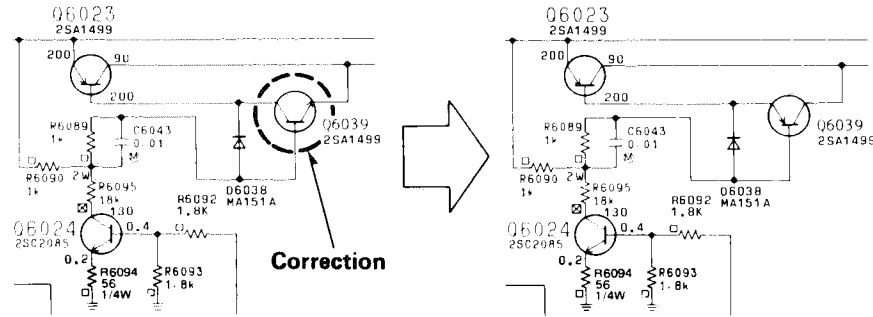


- For E/B/T/DF-Board sections, refer to this supplement manual together with the supplement manual (Supplement-1).

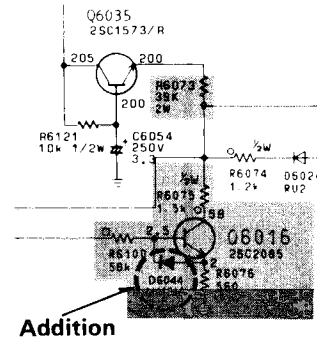
- On page 18 and 19. (E-Board section)



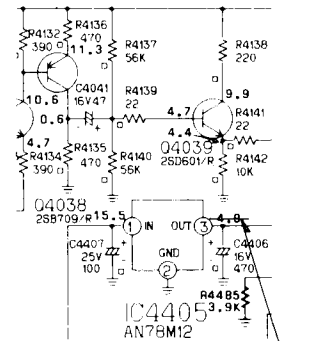
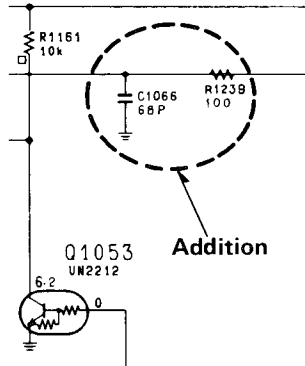
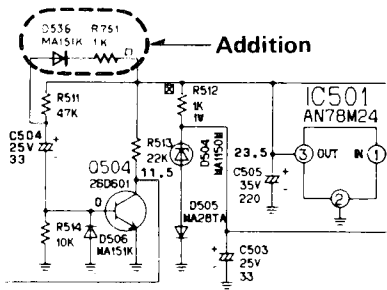
- On page 18. (E-Board section)



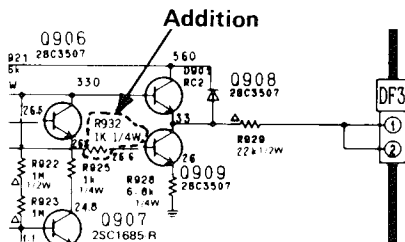
- On page 19. (E-Board section)



- On page 40. (B-Board section)
- On page 42. (T-Board section)
- On page 36. (A-Board section)



- On page 32. (DF-Board section)



## CHANGE OF ADJUSTMENTS (for original manual)

- On page 27.

### OLD

#### 9. PAL APC ADJUSTMENT

- 4) Adjust PAL APC ADJ. (R4231) to achieve waveform shown in Fig. 34.

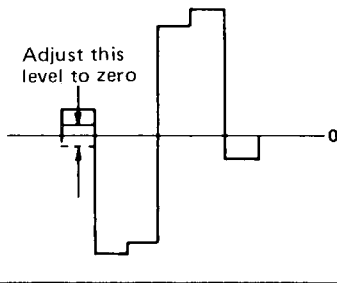


Fig. 34

### NEW

#### 9. PAL APC ADJUSTMENT

- 4) Adjust PAL APC Adj. (R4231) to achieve waveform shown in Fig. 34.

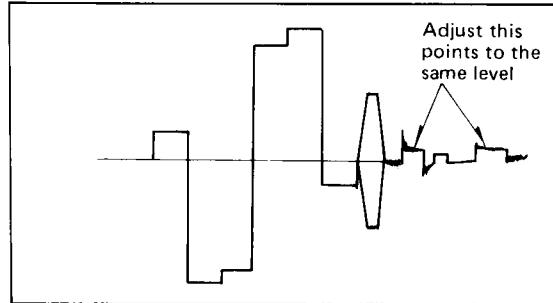


Fig. 34

- On page 27.

### OLD

#### 10. PAL DELAY LINE ADJUSTMENT

- 4) Adjust Delay Line Adj. VR (R4239) and Delay Line Matching Trans. (L4217) to achieve waveform shown in Fig. 35.

### NEW

#### 10. PAL DELAY LINE ADJUSTMENT

- 4) Adjust Delay Line Adj. VR (R4239) and Delay Line Matching Trans. (L4217) to achieve waveform shown in Fig. 35.

- 5) Confirm the PAL APC ADJUSTMENT (Section 9) again.

Addition

## ⚠ WARNING

This service literature is designed for experienced repair technicians only and is not designed for use by the general public. It does not contain warnings or cautions to advise non-technical individuals of potential dangers in attempting to service a product. Products powered by electricity should be serviced or repaired only by experienced professional technicians. Any attempt to service or repair the product or products dealt with in this service literature by anyone else could result in serious injury or death.