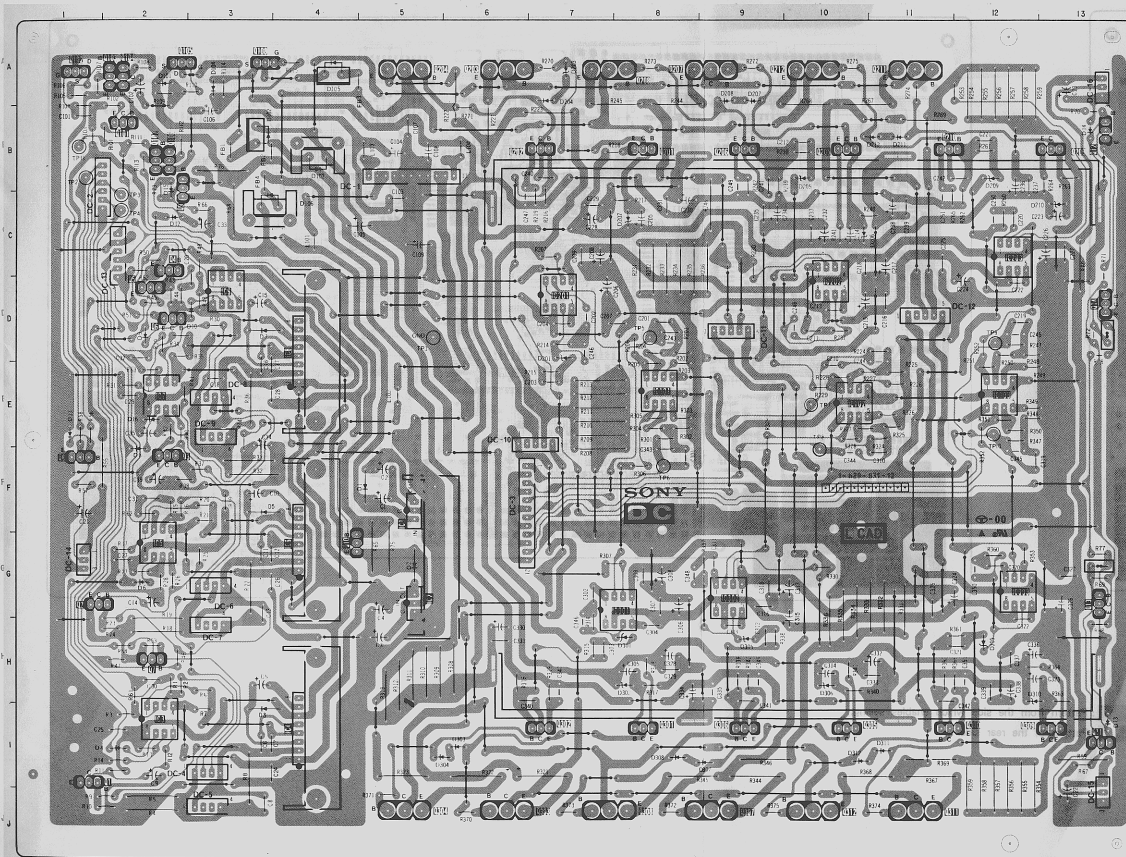


DC

[V. OUT. SUB. OUT]

-DC BOARD-

VPH-1270Q
RM-1270VPH-1270Q
RM-1270

DC Board

IC		Q209		D212	
IC001	F-5	Q210	B-11	D301	B-10
IC002	G-5	Q211	A-11	D302	H-8
IC003	I-2	Q212	A-10	D303	I-6
IC004	I-4	Q301	I-8	D304	I-6
IC005	G-2	Q302	I-7	D305	H-9
IC006	G-4	Q303	J-6	D306	H-10
IC007	E-2	Q304	J-5	D307	I-9
IC008	D-4	Q305	I-10	D308	I-8
IC009	D-3	Q306	I-9	D309	H-12
IC101	E-8	Q307	J-9	D310	H-12
IC102	E-10	Q308	J-7	D311	I-11
IC103	E-12	Q309	I-13	D312	I-10
IC201	D-7	Q310	I-11		
IC202	D-10	Q311	J-11		
IC203	C-12	Q312	J-10		
IC301	G-8				
IC302	G-9				
IC303	G-12				
TRANSISTOR		DIODE			
Q001	I-1	D001	F-5		
Q002	G-1	D002	G-5		
Q003	F-2	D003	I-3		
Q004	C-2	D004	I-2		
Q005	D-2	D005	F-3		
Q006	D-2	D006	G-2		
Q007	H-2	D007	D-3		
Q008	F-1	D008	F-2		
Q009	C-2	D009	D-2		
Q010	G-4	D010	D-3		
Q011	I-13	D011	F-1		
Q012	A-1	D012	C-2		
Q013	G-13	D013	I-13		
Q101	B-2	D014	B-2		
Q102	A-1	D015	E-2		
Q103	A-2	D016	A-2		
Q104	A-2	D017	A-3		
Q105	A-2	D018	B-3		
Q106	B-2	D019	A-3		
Q107	B-2	D020	A-4		
Q108	A-3	D021	B-4		
Q201	B-8	D022	D-7		
Q202	B-7	D023	C-8		
Q203	A-6	D024	A-7		
Q204	A-5	D025	B-10		
Q205	B-10	D026	C-10		
Q206	B-9	D027	A-9		
Q207	A-9	D028	A-9		
Q208	A-7	D029	B-12		
		D030	C-13		
		D031	B-11		

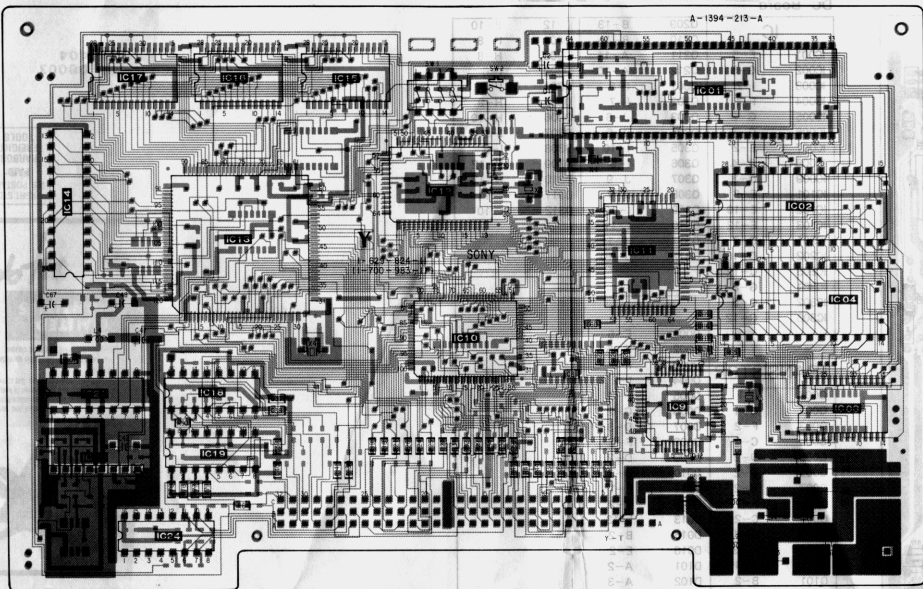
Y

[CPU, MEMORY]

-Y BOARD- (CONDUCTOR SIDE)

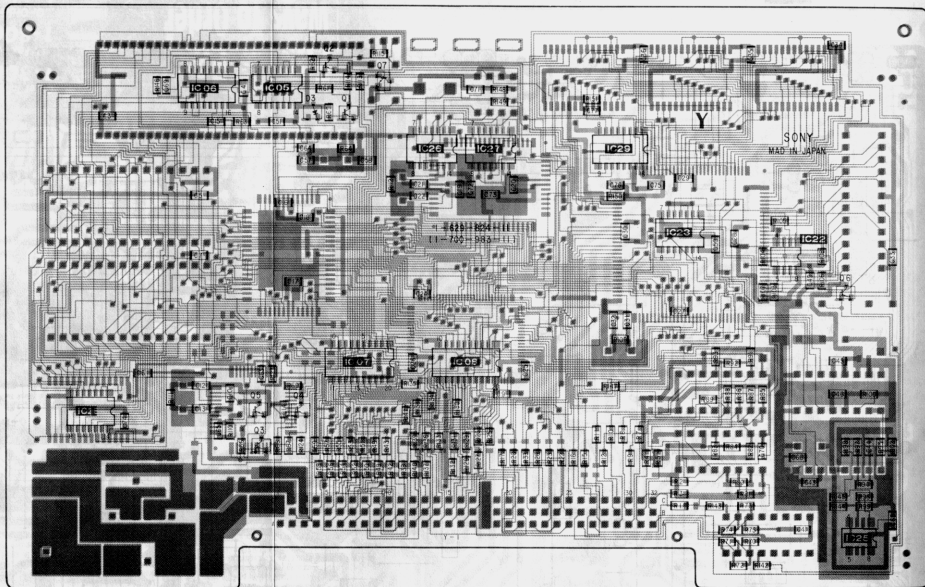
■ : Pattern from the side which enables seeing.

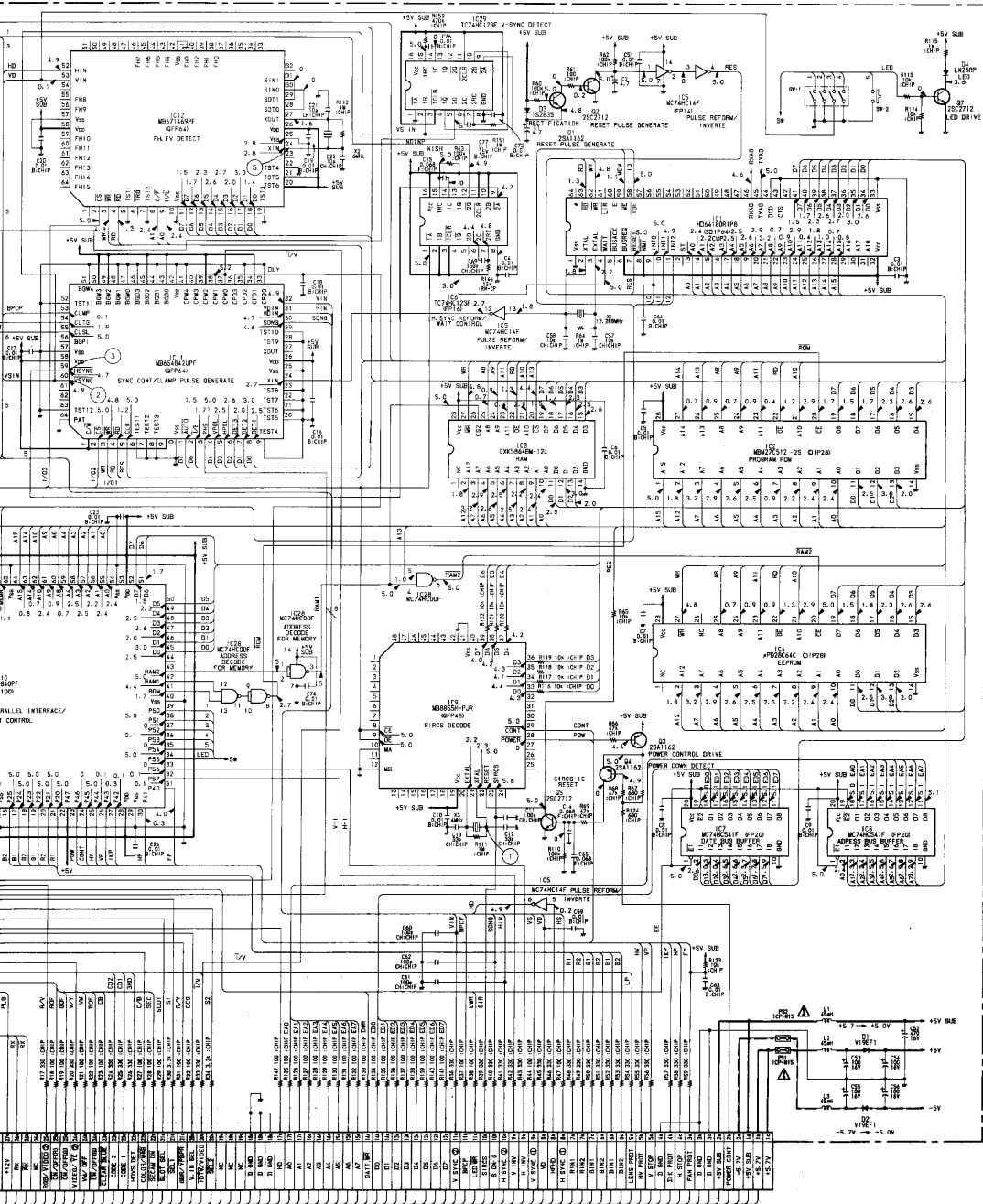
■ : Pattern of the rear side.



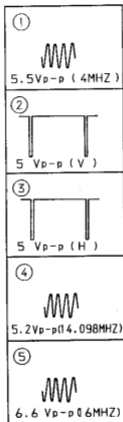
— Y BOARD — (COMPONENT SIDE)

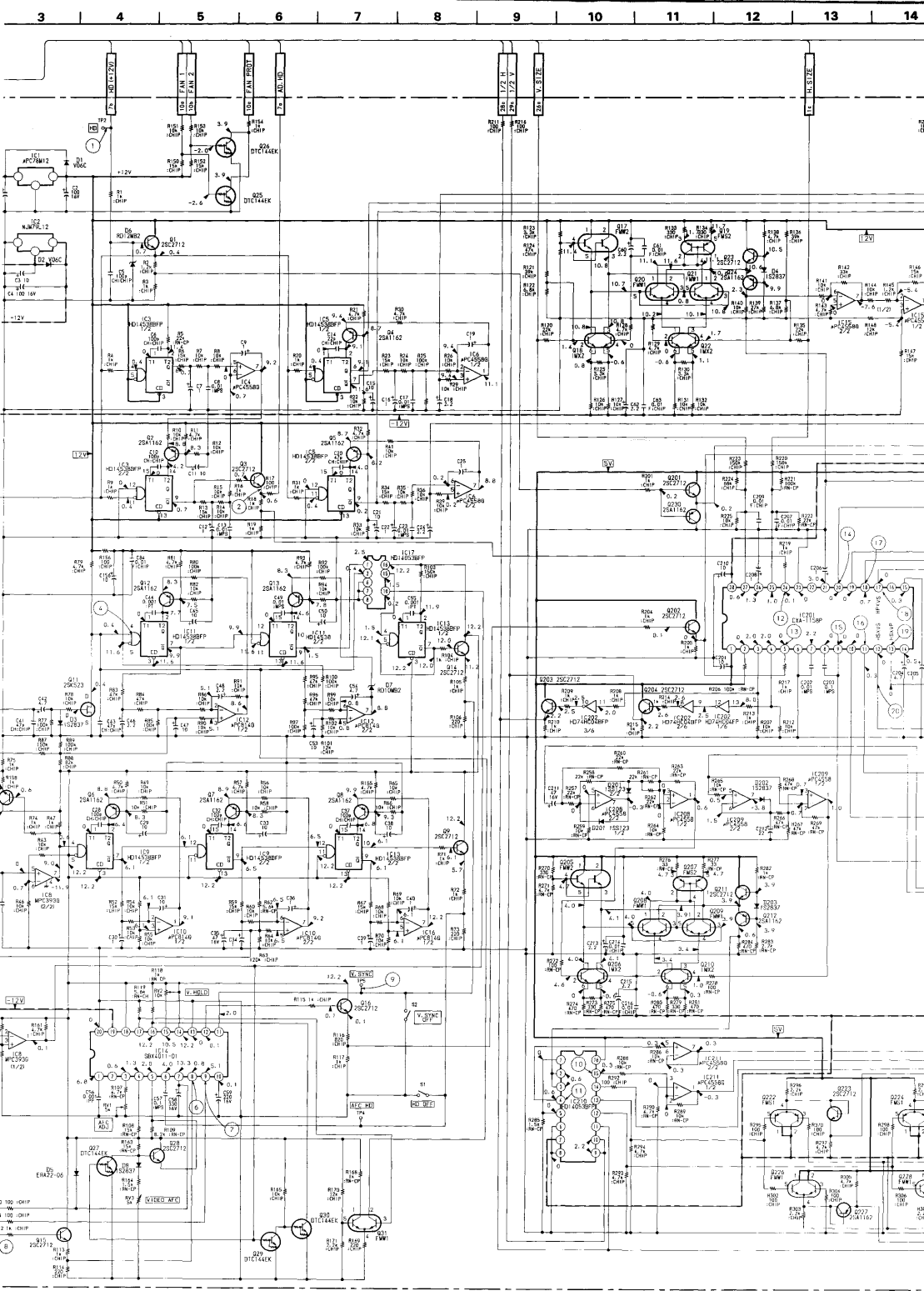
■ : Pattern from the side which enables seeing.
■ : Pattern of the rear side.

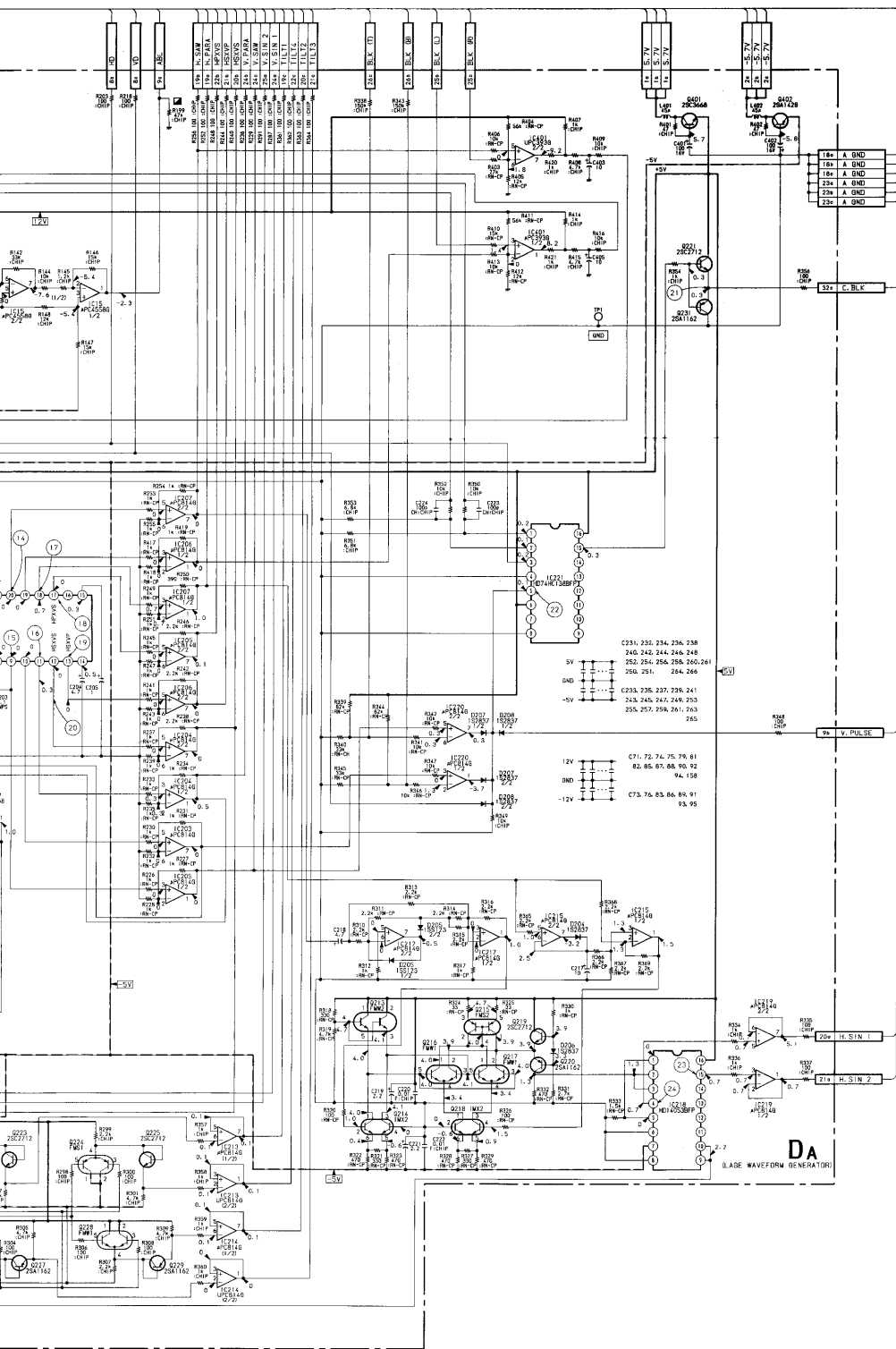




• Y BOARD WAVEFORM







DA

[LAGE WAVEFORM GENERATOR]

-DA BOARD- (CONDUCTOR SIDE)

VPH-1270Q
RM-1270VPH-1270Q
RM-1270

SONY DA I-629-8II-II (I-700-979-II)

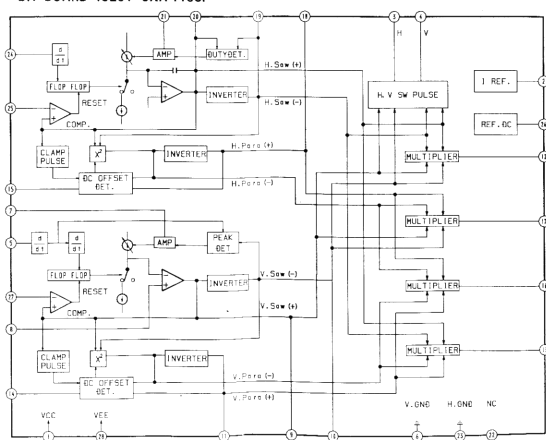
DA Board (Conductor side)

DIODE	IC218 C-8	IC221 E-8	IC208 D-1	IC211 B-10
D003 D-4			IC210 D-3	IC212 C-10
			IC212 C-3	IC219 B-7
			IC213 D-3	IC220 C-7
			IC214 C-1	IC221 E-7
			IC215 D-4	
			IC216 C-2	
IC	TRANSISTOR			
IC003 C-4	Q001 S-2	Q023 A-5		
IC005 B-4	Q002 D-4	Q024 B-5	RV001 A-4	
IC009 C-2	Q003 D-4	Q025 D-5	RV002 A-4	
IC011 C-3	Q004 A-4	Q026 D-5		
IC018 C-1	Q005 C-5	Q201 B-2		
IC202 C-5	Q006 C-2	Q202 B-2		
IC210 C-9	Q007 D-2	Q203 C-5		
IC212 C-8	Q008 D-1	Q204 C-5		

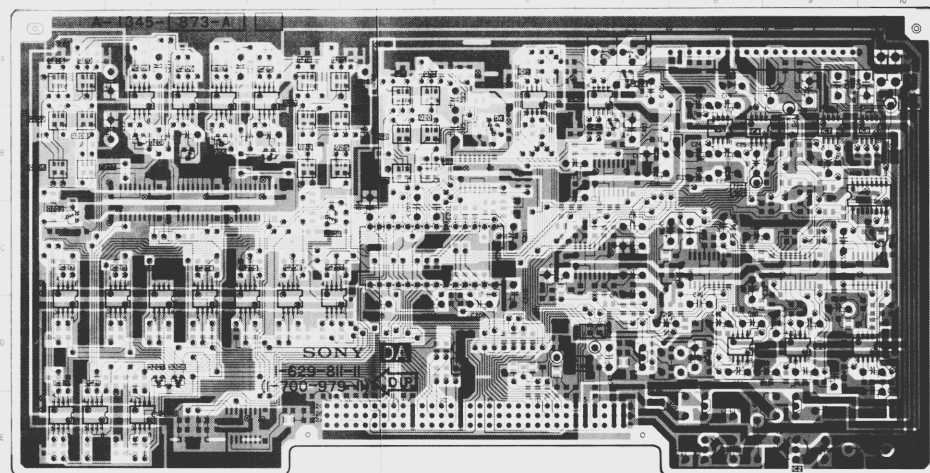
DA Board (Component side)

DIODE	IC	IC204 C-3	IC205 C-3	TRANSISTOR	Q210 A-1
D001 E-8	IC001 E-8	IC206 C-3	IC207 C-4	Q211 D-7	Q214 A-4
D002 E-10	IC002 E-9	IC208 A-2	IC209 A-2	Q217 B-4	Q218 A-4
D004 B-6	IC004 B-8	IC210 D-9	IC211 C-1	Q218 B-5	Q218 A-4
D005 A-8	IC006 B-8	IC212 D-9	IC213 C-1	Q221 B-5	Q401 E-8
D201 B-2	IC008 B-10	IC214 A-8	IC215 A-3	Q222 A-5	Q402 E-9
D202 B-2	IC010 D-9	IC216 A-6	IC217 C-1	Q205 B-1	Q206 A-1
D203 C-1	IC012 D-8	IC218 A-6	IC219 C-2	Q207 B-1	Q208 B-1
D204 B-3	IC014 A-9	IC220 E-2	IC221 C-5	Q208 B-1	
D206 C-4	IC016 D-10	IC401 C-5			
D207 D-2	IC017 C-10				
D208 D-2	IC201 C-5				

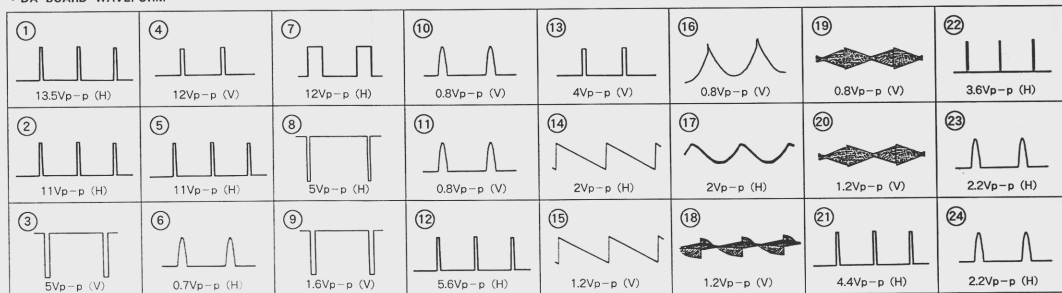
• DA BOARD IC201 CXA-1158P



- DA BOARD - (COMPONENT SIDE)



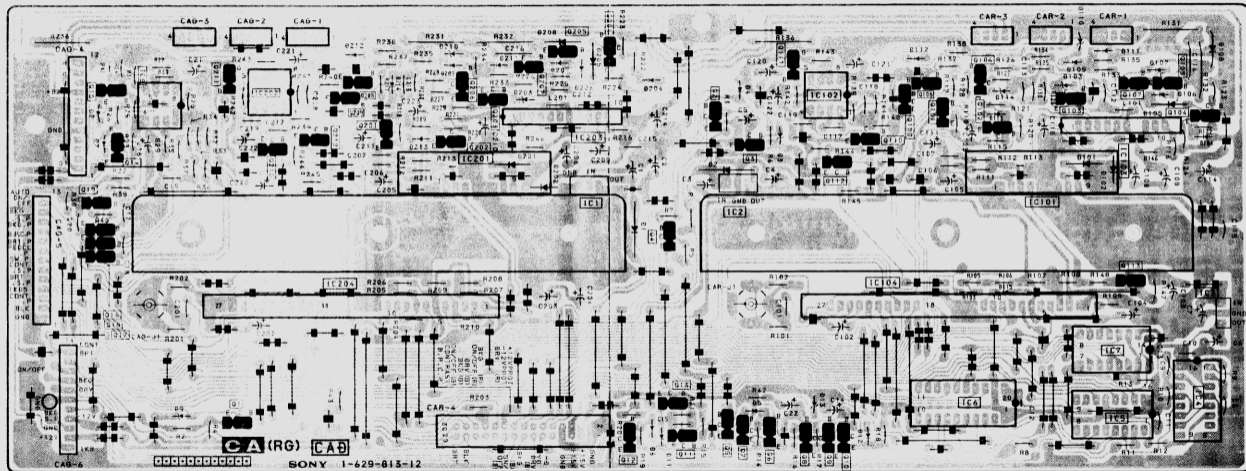
• DA BOARD WAVEFORM

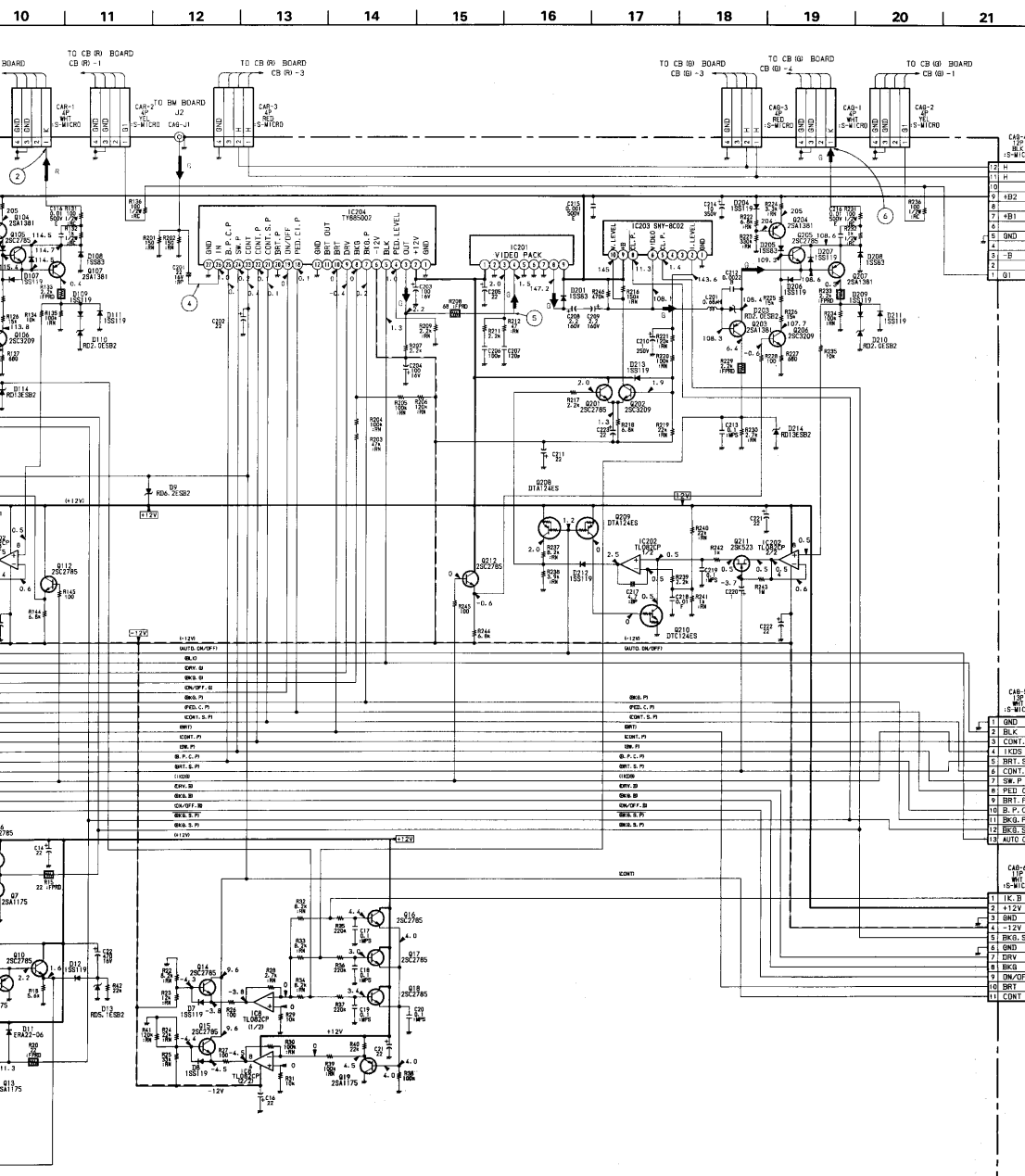


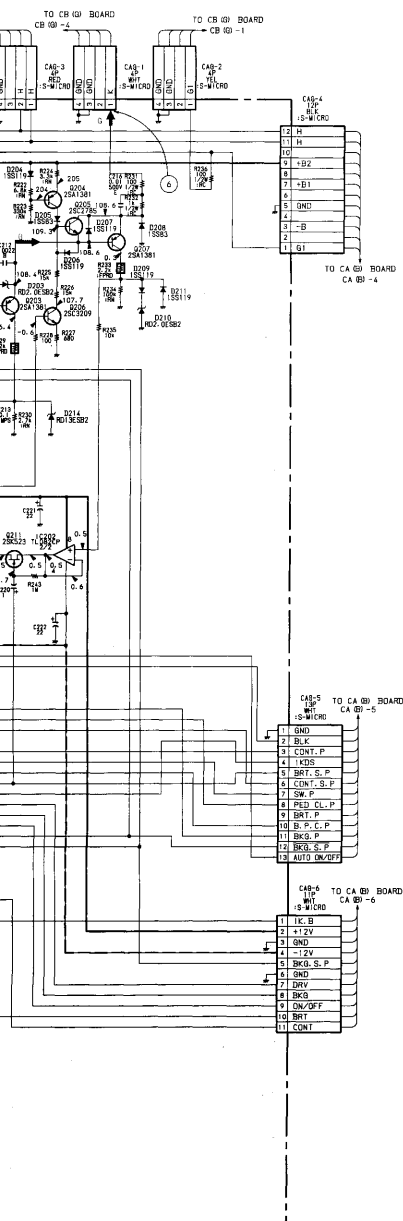
CA(RG)

VIDEO OUT (R).
VIDEO OUT (G).

— CA (RG) BOARD —

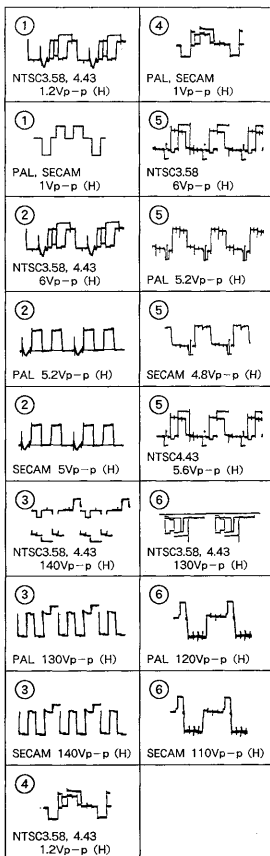






D1	V05C	-12V REG PROT
D2	V05C	+12V REG PROT
D3	R05GESB2	+12V PROT
D4	1S5119	+12V PROT
D5	1S5119	BUS
D6	1S5119	RA/S
D7	1S5119	PEAK ABL
D8	1S5119	S T ABL
D9	R05GESB2	CON PROT
D10	ERA22-06	PROT
D11	ERA22-06	ON SPOT PROT
D12	1S5119	ON SPOT PROT
D13	R05GESB2	R VIDEO OUT PROT
D14	1S582	R K DET-1 PROT
D15	1S5119	R THERM COMP
D16	1S5119	R K DET-2 PROT
D17	1S5119	R K DET-2 PROT
D18	1S5119	R K DET-2 PROT
D19	1S5119	R K DET-2 PROT
D20	1S5119	R K DET-2 PROT
D21	1S5119	R K DET-2 PROT
D22	1S5119	R K DET-2 PROT
D23	1S5119	R K DET-2 PROT
D24	1S5119	R K DET-2 PROT
D25	1S5119	R K DET-2 PROT
D26	1S5119	R K DET-2 PROT
D27	1S5119	R K DET-2 PROT
D28	1S5119	R K DET-2 PROT
D29	1S5119	R K DET-2 PROT
D30	1S5119	R K DET-2 PROT
D31	1S5119	R K DET-2 PROT
D32	1S5119	R K DET-2 PROT
D33	1S5119	R K DET-2 PROT
D34	1S5119	R K DET-2 PROT
D35	1S5119	R K DET-2 PROT
D36	1S5119	R K DET-2 PROT
D37	1S5119	R K DET-2 PROT
D38	1S5119	R K DET-2 PROT
D39	1S5119	R K DET-2 PROT
D40	1S5119	R K DET-2 PROT
D41	1S5119	R K DET-2 PROT
D42	1S5119	R K DET-2 PROT
D43	1S5119	R K DET-2 PROT
D44	1S5119	R K DET-2 PROT
D45	1S5119	R K DET-2 PROT
D46	1S5119	R K DET-2 PROT
D47	1S5119	R K DET-2 PROT
D48	1S5119	R K DET-2 PROT
D49	1S5119	R K DET-2 PROT
D50	1S5119	R K DET-2 PROT
D51	1S5119	R K DET-2 PROT
D52	1S5119	R K DET-2 PROT
D53	1S5119	R K DET-2 PROT
D54	1S5119	R K DET-2 PROT
D55	1S5119	R K DET-2 PROT
D56	1S5119	R K DET-2 PROT
D57	1S5119	R K DET-2 PROT
D58	1S5119	R K DET-2 PROT
D59	1S5119	R K DET-2 PROT
D60	1S5119	R K DET-2 PROT
D61	1S5119	R K DET-2 PROT
D62	1S5119	R K DET-2 PROT
D63	1S5119	R K DET-2 PROT
D64	1S5119	R K DET-2 PROT
D65	1S5119	R K DET-2 PROT
D66	1S5119	R K DET-2 PROT
D67	1S5119	R K DET-2 PROT
D68	1S5119	R K DET-2 PROT
D69	1S5119	R K DET-2 PROT
D70	1S5119	R K DET-2 PROT
D71	1S5119	R K DET-2 PROT
D72	1S5119	R K DET-2 PROT
D73	1S5119	R K DET-2 PROT
D74	1S5119	R K DET-2 PROT
D75	1S5119	R K DET-2 PROT
D76	1S5119	R K DET-2 PROT
D77	1S5119	R K DET-2 PROT
D78	1S5119	R K DET-2 PROT
D79	1S5119	R K DET-2 PROT
D80	1S5119	R K DET-2 PROT
D81	1S5119	R K DET-2 PROT
D82	1S5119	R K DET-2 PROT
D83	1S5119	R K DET-2 PROT
D84	1S5119	R K DET-2 PROT
D85	1S5119	R K DET-2 PROT
D86	1S5119	R K DET-2 PROT
D87	1S5119	R K DET-2 PROT
D88	1S5119	R K DET-2 PROT
D89	1S5119	R K DET-2 PROT
D90	1S5119	R K DET-2 PROT
D91	1S5119	R K DET-2 PROT
D92	1S5119	R K DET-2 PROT
D93	1S5119	R K DET-2 PROT
D94	1S5119	R K DET-2 PROT
D95	1S5119	R K DET-2 PROT
D96	1S5119	R K DET-2 PROT
D97	1S5119	R K DET-2 PROT
D98	1S5119	R K DET-2 PROT
D99	1S5119	R K DET-2 PROT
D100	1S5119	R K DET-2 PROT

• CA (RG) BOARD WAVEFORM

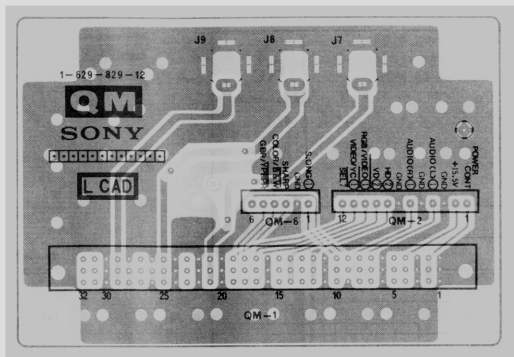




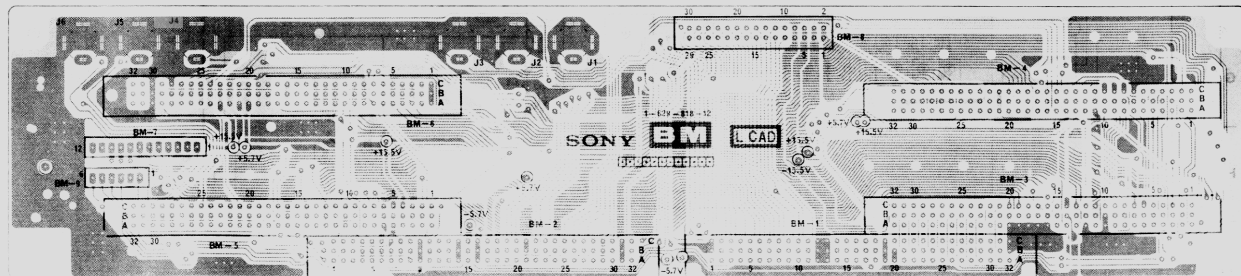




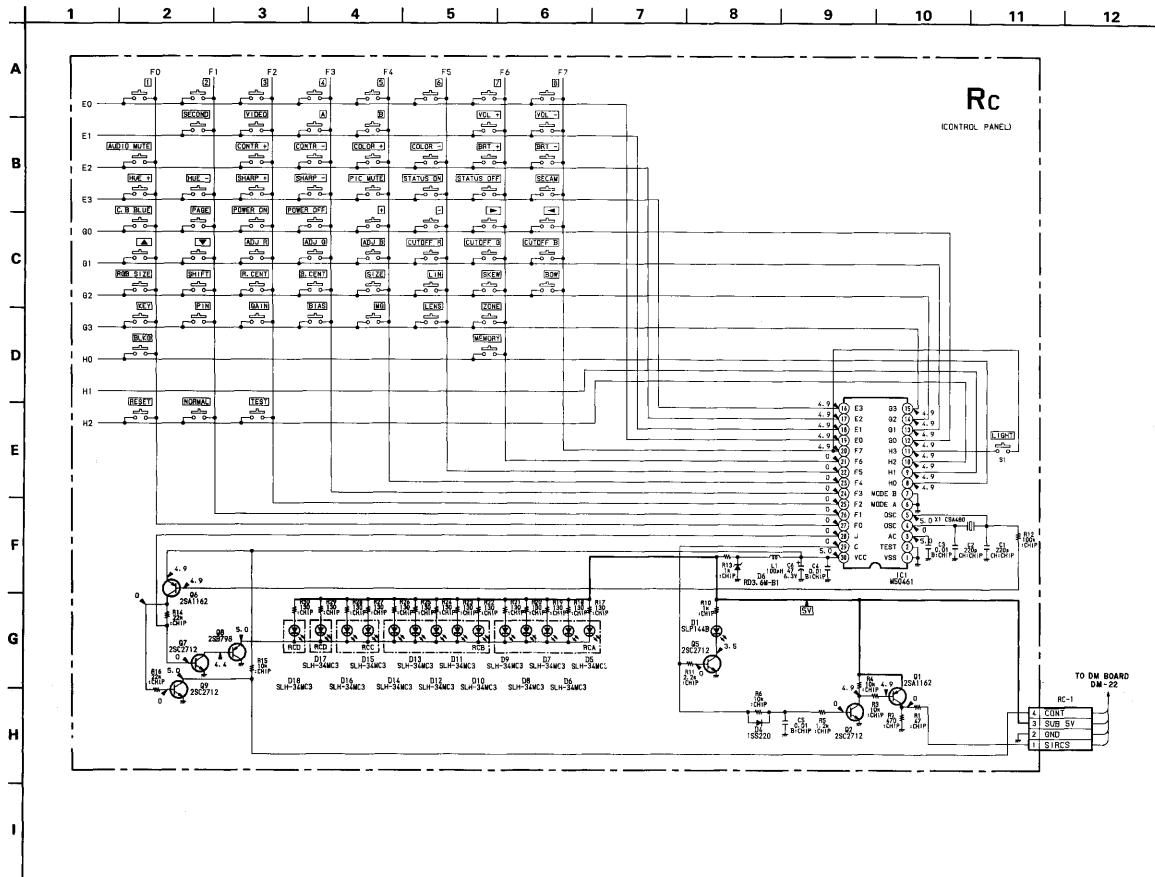
— QM BOARD —






— BM BOARD —

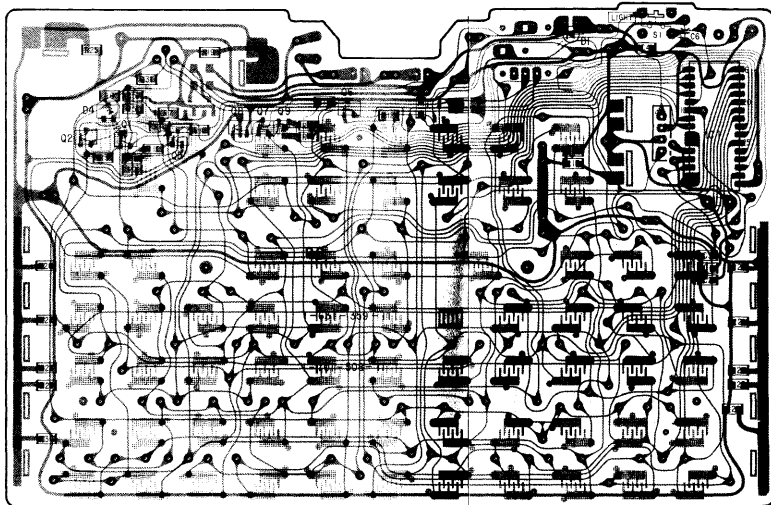





Pattern from the side which enables seeing.
Pattern of the rear side.



— RC BOARD — (COMPONENT SIDE)



 : Conductor side.
 : Component side.
 : Carbon pattern side.



 : Component side.
 : Conductor side.
 : Carbon pattern side.

— RC-D BOARD —



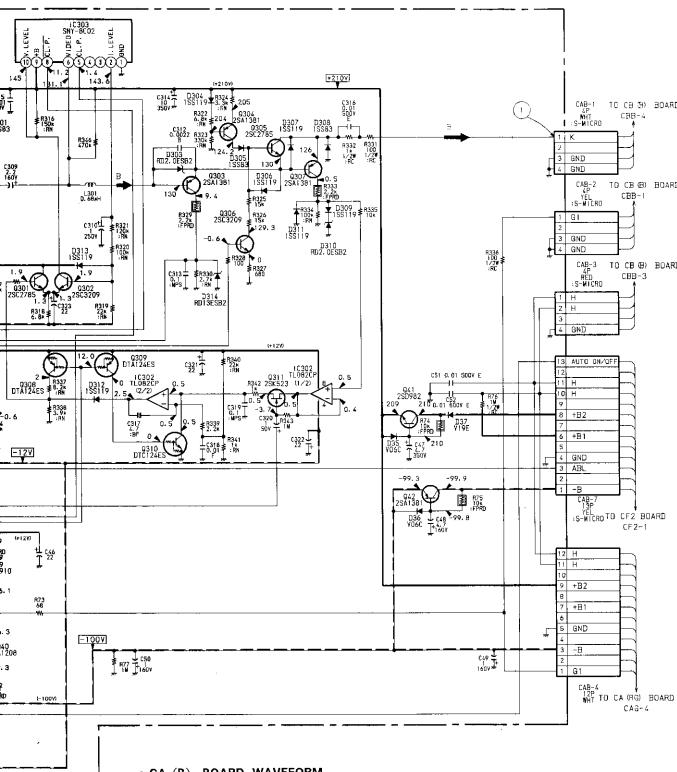
 : Pattern from the side which enables seeing.
 : Pattern of the rear side.

— RC-D BOARD —

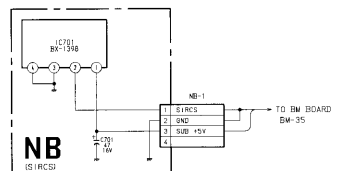
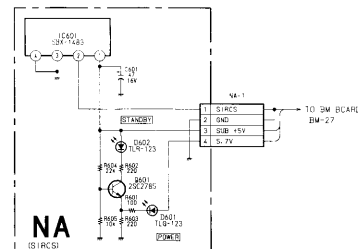
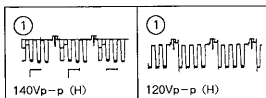




9 10 11 12 13 14 15 16 17 18 19 20 21



• CA (B) BOARD WAVEFORM



(CA (B) BOARD)

030	ISS119	OFF SPOT PROT	035	25C2785	BLK
031	ISS83	BLK	036	25A1208	BLK
032	ISS83	BLK	037	25A1209	BLK
033	ISS119	BLK	038	25C2910	BLK
034	ISS119	BLK	039	25C2910	BLK
036	V06C	+210V RIPPLE FILTER PACT	040	25A1208	BLK
036	V06C	100V RIPPLE FILTER PROT	041	25C082	+210V RIPPLE FILTER
037	V19E	+210V RIPPLE FILTER PROT	042	25A1381	-100V RIPPLE FILTER
038	RD12ESB2	BRT PULSE GEN	043	DT1C124ES	BRT PULSE GEN
039	ISS83	BRT PULSE GEN	0302	25C3209	S CLAMP
0301	ISS83	B VIDEO OUT PROT	0303	25A1381	S K DET-1
0303	RD20ESB2	B K DET-1 PROT	0304	25A1381	S THERM COMP
0304	ISS119	S THERM COMP	0305	25C2785	B K DET-2
0305	ISS83	B K DET-2 PROT	0306	25C3209	B K DET-2
0306	ISS119	B K DET-2 PROT	0307	25A1381	B K DET-2
0307	ISS119	B K DET-2 PROT	0308	DT1A124ES	B AUTO BKG SW
0308	ISS83	B VIDEO OUT PROT	0309	DT1A124ES	B AUTO BKG SW
0309	ISS119	B K DET-2 PROT	0310	DT1C124ES	B AUTO BKG SW
0310	RD20ESB2	B K DET-2 PROT	0311	25K523	B AUTO BKG SW
0311	ISS119	B K DET-2 PROT	0312	25C2785	B K DET-2
0312	ISS119	B AUTO BKG SW			
0313	ISS119	B OFF SPOT PROT			
0314	RD13ESB2	B K DET-2 PROT			
0315	RD33ESB2	S DRV			
030	25C2785	I ABL			
031	25C2785	I ABL			
032	25A1175	OFF SPOT PROT			
033	25C2785	BLK			
034	25A1175	BLK			

NA

[SIRCS]

NB

[SIRCS]

CA(B)

[VIDEO OUT (B)]

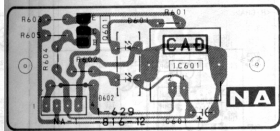
CF-1

[FILTER]

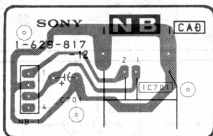
CF-2

[FILTER]

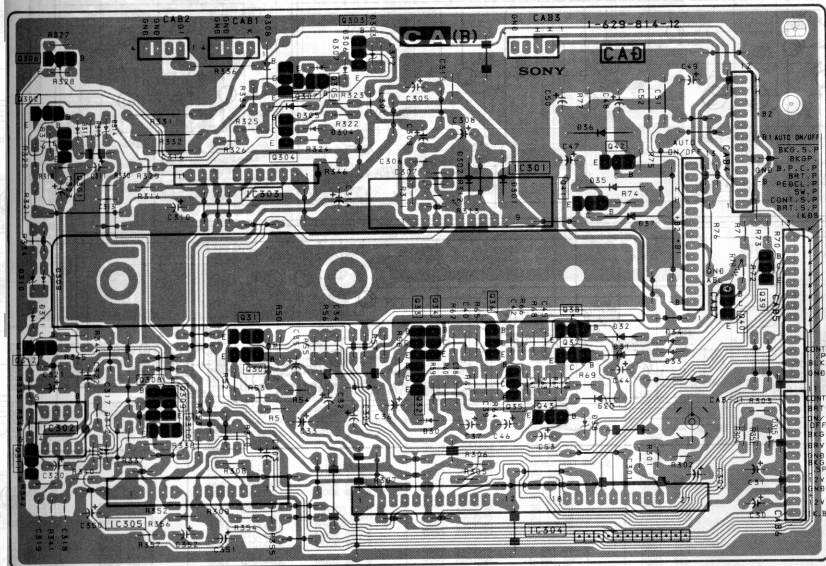
-NA BOARD-



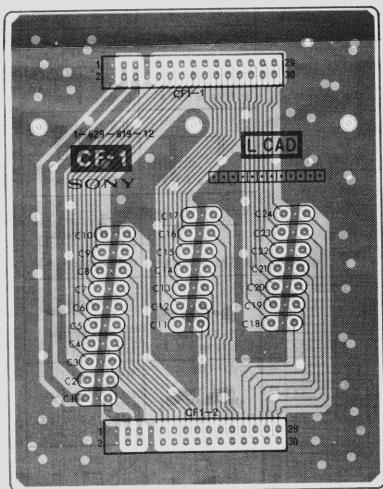
— NB BOARD —





-CA (B) BOARD-

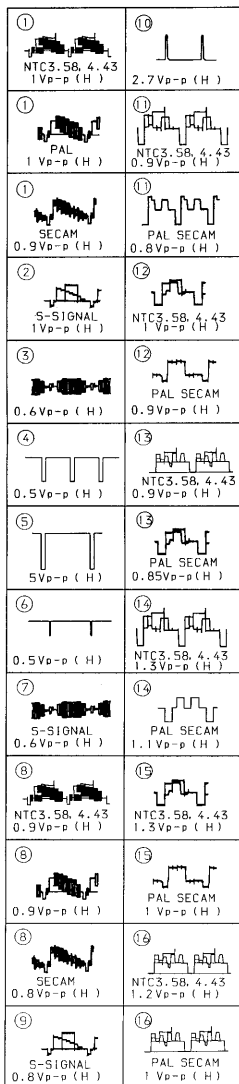


—CF-1 BOARD—



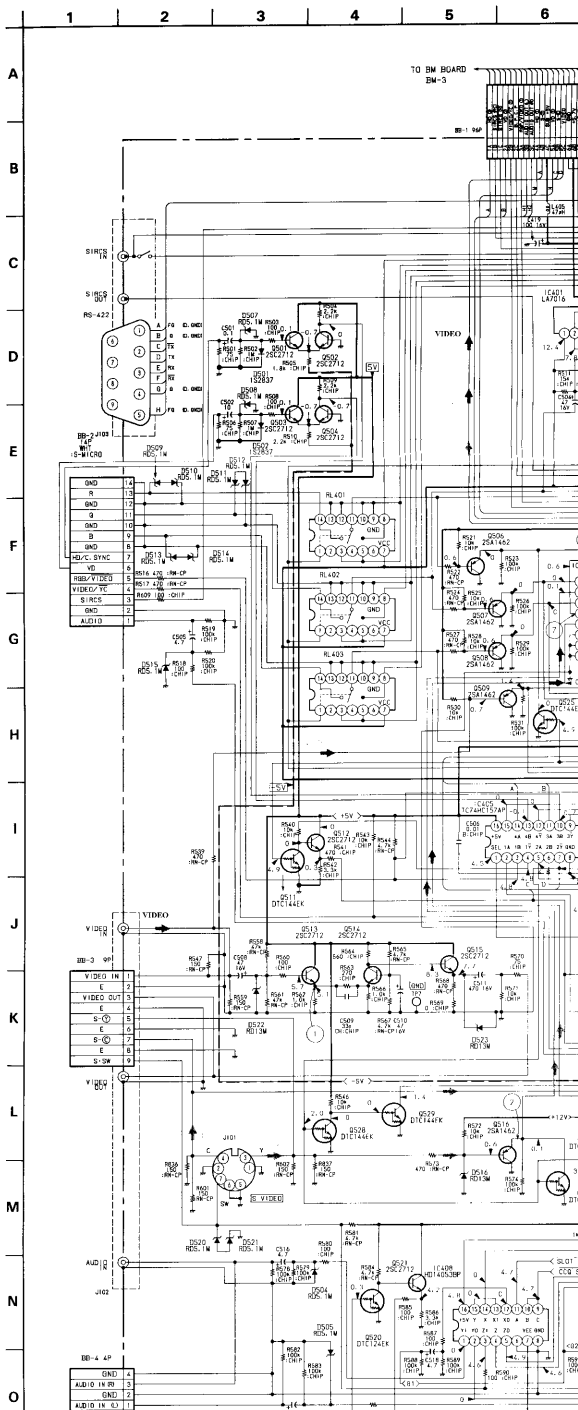
-  : Pattern from the side which enables seeing.
-  : Pattern of the rear side.

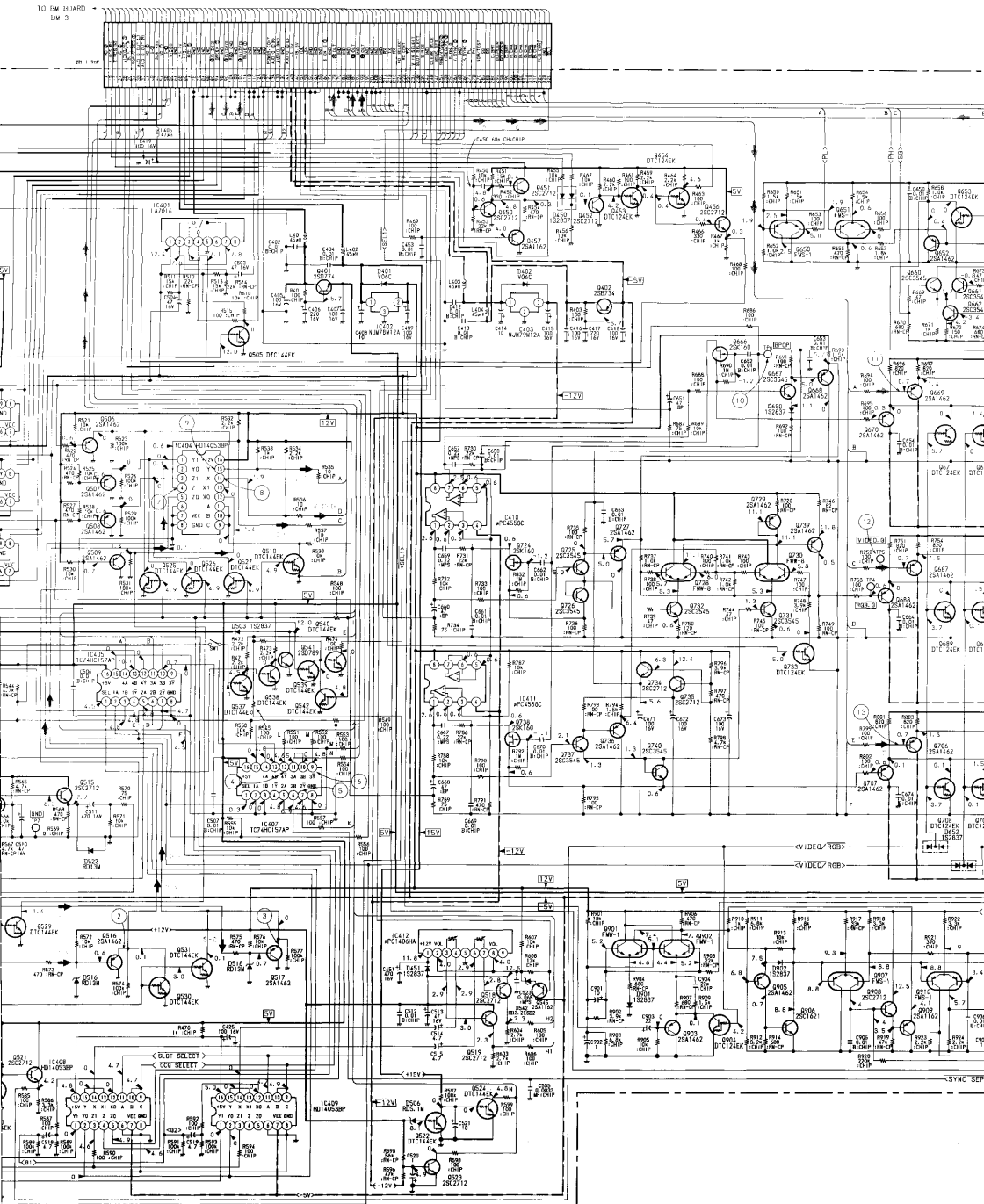
• BB BOARD WAVEFORM



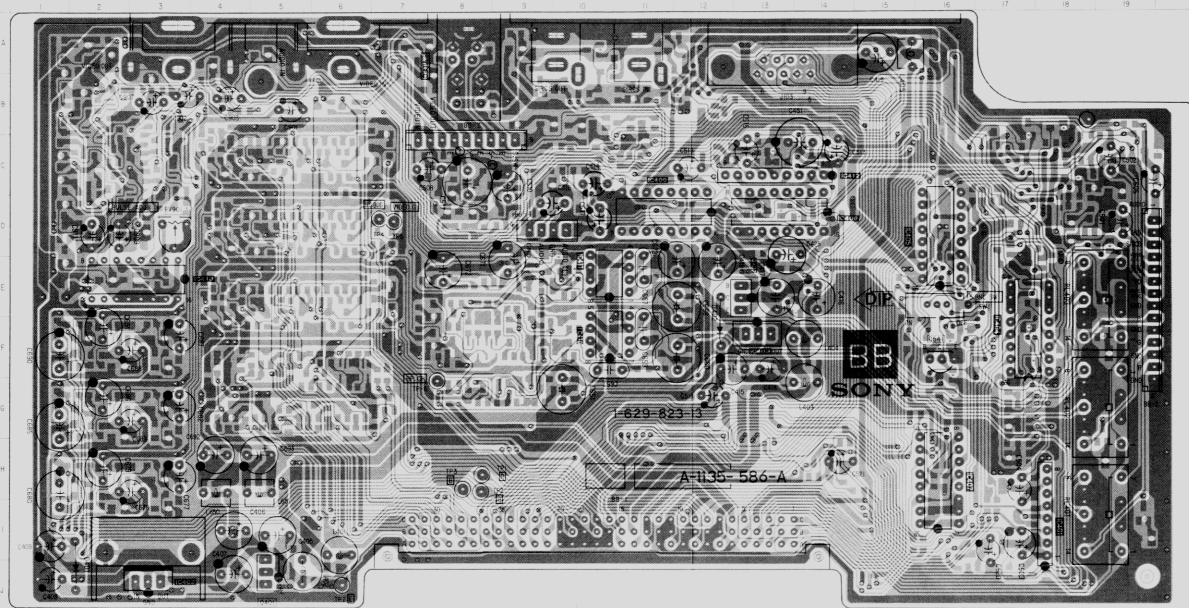
Q-NO.	NTSC 5.58	PAL	SECAM	NTSC 4.43	S-VIDEO
0514	7.4	6.1	6.1	6.1	6.1
0521	5.4	4.9	4.9	4.9	4.9
0455	7.9	4.9	4.9	4.9	4.9
0454	5.0	4.7	4.7	4.7	4.7
0455					
0456	7.9	5.8	5.2	5.2	4.7
0456	7.8	4.7	4.9	4.9	4.9
0440	10.4	11.9	1.9	1.9	1.7
	7.9	5.8	5.4	5.2	4.9
0461	-0.9	1.2	-1.9	1.2	-1.7
0464	5.3	8.4	6.8	6.8	6.8
0467	1.1	2.1	2.8	2.9	2.9
0457	-0.2	4.5	0.5	3.5	-0.5
0720	-5.3	1.8	1.8	1.8	1.8
0720	11.5	11.5	11.5	11.5	11.5
0730	5.1	6.1	6.1	6.1	6.1
	5.1	6.1	6.1	6.1	6.1
0732	0.5	1.5	1.5	1.5	1.5
	5.2	6.8	6.8	6.8	6.8
0730	4.5	6.2	6.2	6.2	6.2
0737	5.3	5.7	5.7	5.7	5.7

IC-NO.	PIN-NO.	NTSC 5.58	PAL	SECAM	NTSC 4.43	S-VIDEO
IC54A	①	4.4	4.9	4.9	4.9	4.9
IC400	①	4.4	4.9	4.9	4.9	4.9
IC400	②	0.6	4.6	4.6	4.6	4.6
IC400	③	4.2	5.6	5.6	4.6	4.6



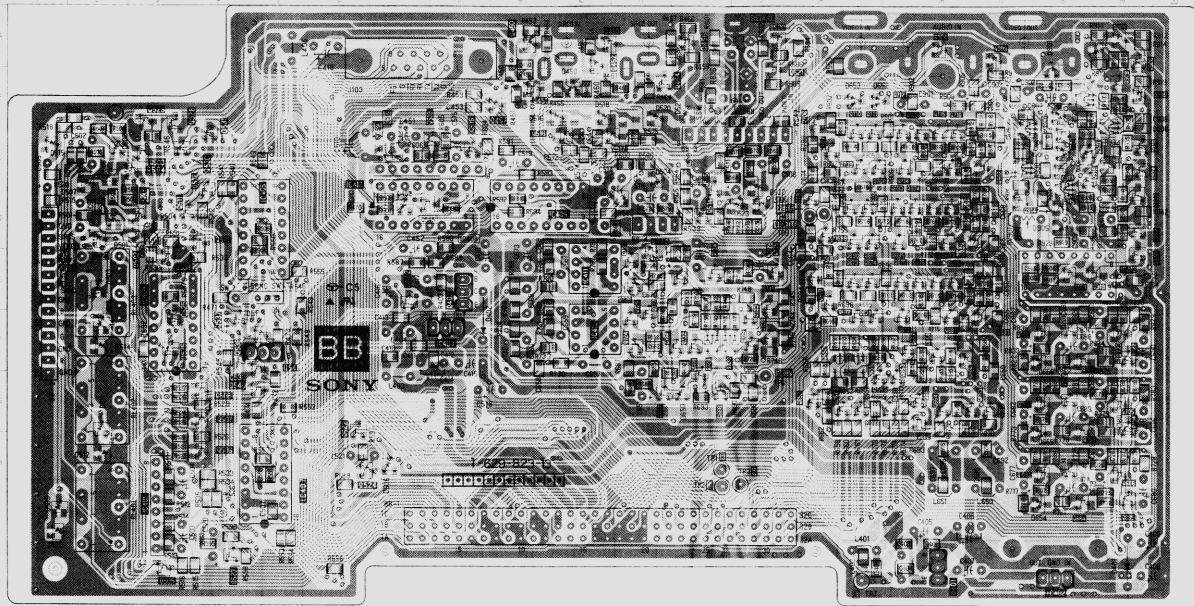




-**BB BOARD**- (COMPONENT SIDE)

C401	LA70176	SYNC G SW-1	Q508	25A1462	G BUFF-1	Q539	DT1C144EK	MODE SW-15	Q672	DT1244EK	SIG SW-2	Q699	25C3545	G CHA SW-2	Q728	FMW-8	CB SW-1	Q915	FMS1	S ON G AMP-6
C402	NLM7M71A2	+12V REG	Q509	25A1462	G BUFF-1	Q540	DT1C144EK	MODE SW-16	Q673	25C3545	VIDEO R BUFF-2	Q701	26C3545	G AMP-1	Q729	25A1462	C B SW-2	Q916	25A162	S ON G AMP-7
C403	LA70176	SYNC G SW-2	Q510	25A1462	G BUFF-1	Q541	DT1C144EK	MODE SW-17	Q674	25C3545	VIDEO R BUFF-2	Q702	26C3545	G AMP-2	Q730	FMW-8	C B SW-3	Q917	25A162	S ON G AMP-8
C404	LA70453BP	INPUT SW	Q511	DT1C144EK	MODE SW-2	Q542	DT1C144EK	MODE SW-18	Q675	25C3545	R BUFF-5	Q703	25C3545	G AMP-3	Q731	FMW-8	C B SW-4	Q918	25C2712	S ON G AMP-9
C405	LA70453BP	SYNC SW-1	Q512	25C2712	VIDEO AMP-1	Q543	25A1162	PL GEN-1	Q676	25C3545	BD SW-4	Q704	25C3545	G AMP-4	Q732	25C3545	C B SW-5	Q919	25C2712	TS DET-1
C406	TC74HC157AP	SYNC SW-2	Q513	25C2712	VIDEO AMP-2	Q544	25A1162	PL GEN-2	Q677	25C3545	R BUFF-6	Q705	25C3545	G AMP-5	Q733	25C3545	C B SW-6			
C408	HD14053BP	AUDIO SW-1	Q514	25C2712	VIDEO AMP-3	Q551	FMS1	PL GEN-3	Q678	25C3545	R BUFF-6	Q706	25A1462	VIDEO B SW-1	Q734	25C2712	CB REF BUFF-1	Q920	25C2712	TS DET-2
C409	HD14053BP	AUDIO SW-2	Q515	25C2712	REF GEN-1	Q552	DT1C124EK	NOR TEST SW-1	Q679	25C3545	R CHA BUFF-1	Q707	25C2712	SIG BUFF-1	Q735	25C2712	CB REF BUFF-2	Q921	25C2712	TS DET-3
C410	LA70453BP	REF GEN-2	Q516	25A1462	Y BUFF-1	Q553	DT1C124EK	NOR TEST SW-2	Q680	25C3545	R CHA SW-1	Q708	DT1C124EK	SIG BUFF-1	Q736	25A1462	B BUFF-6	Q922	25A162	TS DET-4
C411	PC4058H	REF GEN-2	Q517	25A1462	Y BUFF-1	Q554	25A1462	SG SW-1	Q681	25C3545	R CHA SW-2	Q709	DT1C124EK	SIG BUFF-2	Q737	25A162	B BUFF-7	Q923	25A162	TS DET-5
C412	+PC4058H	AUDIO ATT	Q518	25C2712	AUDIO R BUFF-1	Q555	25A1462	SG SW-2	Q682	25C3545	R AMP-1	Q710	25C3545	VIDEO B SW-2	Q738	25A162	B BUFF-8	Q924	25C2712	TS DET-6
C413	MC74HC4538N	S P GEN	Q519	25C2712	AUDIO L BUFF-1	Q556	DT1C124EK	AUDIO L SW-2	Q683	25C3545	R AMP-2	Q711	25C3545	TEST BUFF-3	Q739	25A162	B BUFF-9	Q925	25C2712	TS DET-7
C401	20D774	+5V REG	Q520	25C2712	MODE SW-4	Q557	25C3545	BD SW-2	Q684	25C3545	R AMP-3	Q712	25C3545	BD SW-3	Q740	25C3545	LEVEL SHIFT	D401	VOCG	+12V PROT
C402	20D774	+5V REG	Q521	25C2712	MODE SW-5	Q558	25C3545	BD SW-3	Q685	25C3545	R AMP-4	Q713	25C3545	BD SW-4	Q741	25C3545	ON G AMP-1	D402	VOCG	+12V PROT
C403	25C2712	SIRCS SW-1	Q522	DT1C144EK	POWER CONT-1	Q559	25C3545	SG SW-3	Q686	25C3545	R AMP-5	Q714	25C3545	BD SW-5	Q742	25C3545	ON G AMP-2	D403	VOCG	+12V PROT
C404	25C2712	SIRCS SW-2	Q523	DT1C144EK	POWER CONT-2	Q560	25C3545	SG SW-4	Q687	25A1462	VIDEO G BUFF-1	Q715	25C3545	B BUFF-4	Q743	25C3545	ON G AMP-3	D404	VOCG	+12V PROT
C405	25C2712	SIRCS SW-3	Q524	DT1C144EK	POWER CONT-3	Q561	25C3545	SG SW-5	Q688	25A1462	G BUFF-2	Q716	25C3545	CHA SW-1	Q744	25C3545	ON G AMP-4	D405	VOCG	+12V PROT
C406	25C2712	SIRCS SW-4	Q525	DT1C144EK	POWER CONT-4	Q562	25C3545	SG SW-6	Q689	25A1462	VIDEO G BUFF-2	Q717	25C3545	CHA SW-2	Q745	25C3545	ON G AMP-5	D406	VOCG	+12V PROT
C407	25C2712	SIRCS SW-5	Q526	DT1C144EK	POWER CONT-5	Q563	25C3545	SG SW-7	Q690	25A1462	VIDEO G BUFF-3	Q718	25C3545	CHA SW-3	Q746	25C3545	ON G AMP-6	D407	VOCG	+12V PROT
C408	25C2712	SIRCS SW-6	Q527	DT1C144EK	POWER CONT															

- BB BOARD - (CONDUCTOR SIDE)



FMS1	S ON G AMP-6	D512	RDS1M-T1B2	G PROT-2
2SA1162	S ON G AMP-7	D513	RDS1M-T1B2	B PROT-1
2SC2171	S ON G AMP-8	D514	RDS1M-T1B2	B PROT-2
2SC2172	S ON G AMP-9	D515	RDS1M-T1B2	AUDIO PROT-4
2SC2172	TS DET-1	D516	RDS1M-T1B2	Y PROT
2SC2172-1	TS DET-2	D518	RDS1M-T1B2	C PROT
2SC2172-2	TS DET-3	D520	RDS1M-T1B2	S SW PROT-2
2SA1162	TS DET-4	D521	RDS1M-T1B2	S SW PROT-2
2SC2172	TS DET-5	D522	RDS1M-T1B2	S SW PROT-2
2SC2172	TS DET-6	D523	RDS1M-T1B2	VIDEO PROT
V06C	+12V PROT	D650	152837	LEVEL SHIFT
V06C	+12V PROT	D652	152837	MODE SW-2
152837	SRCS OR	D653	152837	MODE SW-3
152837	AUDIO PROT-1	D654	152837	R BIAS
RD2-2628B	AUDIO PROT-1	D655	152835	R BIAS
152837	HD CLAMP	D656	152123	B BIAS
152837	WD CLAMP	D901	152837	S ON G AMP-1
152837	MODE SW-1	D902	152837	S ON G AMP-2
RDS1M-T1B2	AUDIO PROT-2	D903	152835	S ON G AMP-3
RDS1M-T1B2	AUDIO PROT-3	D904	152837	S ON G AMP-4
RDS1M-T1B2	POW CONT	D905	RDS2M-1191	S ON G AMP-5
RDS1M-T1B2	HD PROT	D906	152835	S ON G AMP-6
RDS1M-T1B2	HD PROT			
RDS1M-T1B2	R PROT-1			
RDS1M-T1B2	R PROT-2			
RDS1M-T1B2	R PROT-1			

BB Board

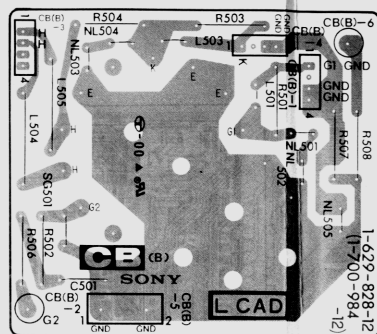
IC	
IC401	I-2
IC402	J-18
IC403	F-8
IC404	E-3
IC405	D-5
IC407	H-5
IC408	D-8
IC409	D-9
IC410	F-10
IC411	E-10
IC412	D-7
IC413	E-19

TRANSISTOR

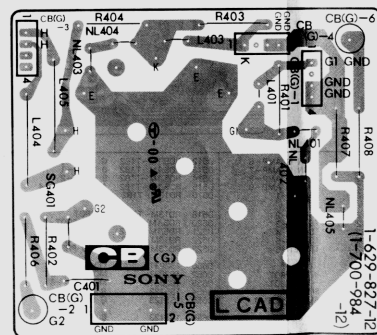
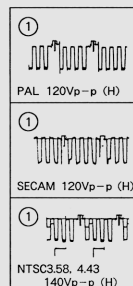
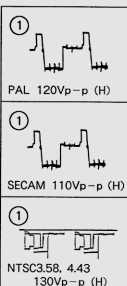
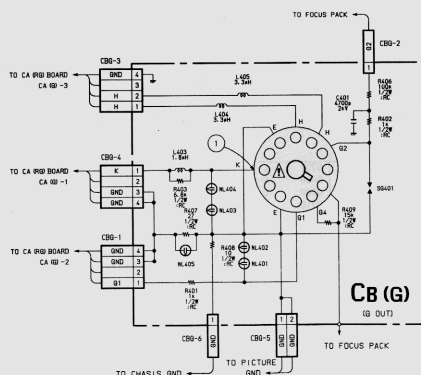
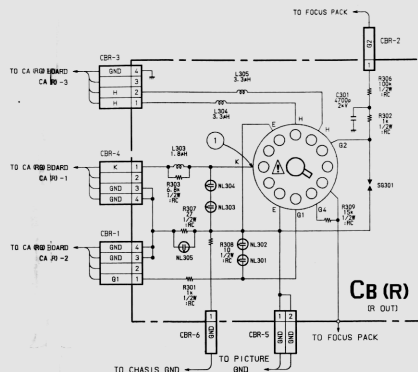
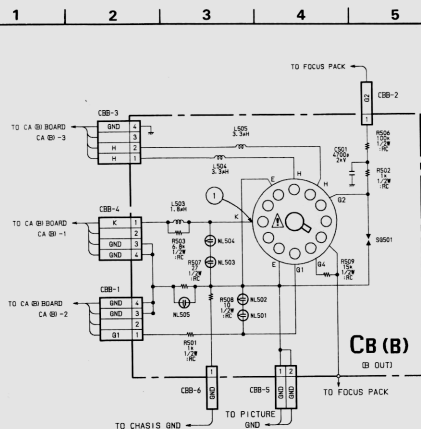
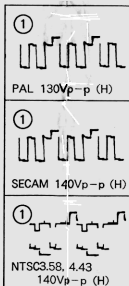
Q401	J-16
Q402	E-8

[illegible]

-CB (B) BOARD-

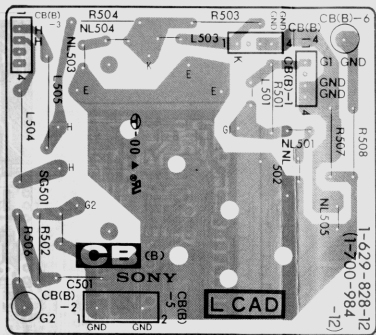


-CB (G) BOARD-

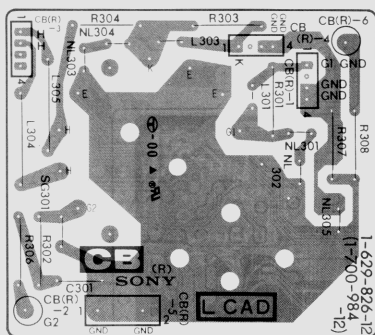

• CB (B) BOARD
WAVEFORM

• CB (G) BOARD
WAVEFORM

• CB (R) BOARD
WAVEFORM


CB (B) [B OUT] **CB (G)** [G OUT] **CB (R)** [R OUT] **X**

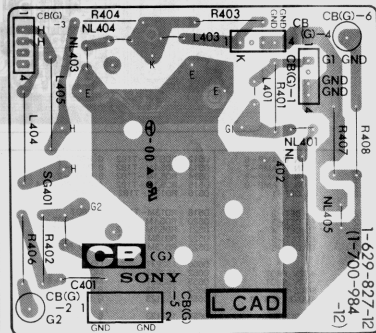
—CB (B) BOARD—



—CB (R) BOARD—



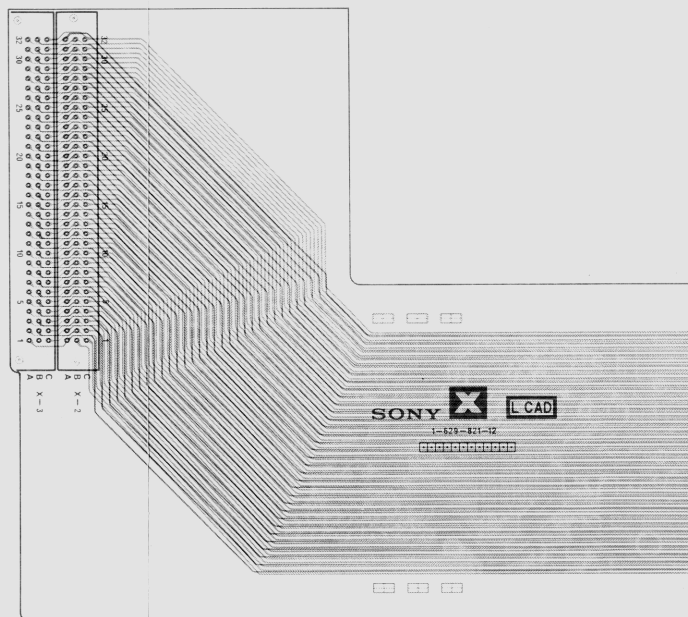
—CB (G) BOARD—



VPH-1270Q
RM-1270

VPH-1270Q
RM-1270

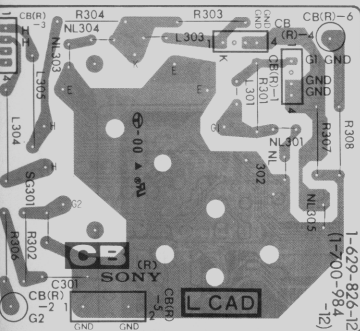
—X BOARD—



■ : Pattern from the side which enables seeing.
□ : Pattern of the rear side.

B(R) [R OUT] **X**

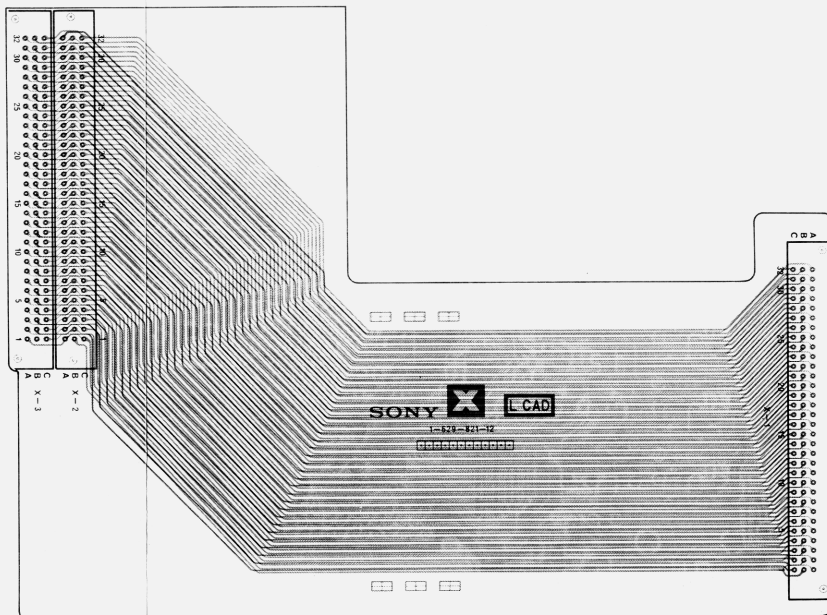
CB (R) BOARD -



VPH-1270Q
RM-1270

VPH-1270Q
RM-1270

-X BOARD-



■ : Pattern from the side which enables seeing.

■ : Pattern of the rear side.

7-6. SEMICONDUCTORS

CX1216P
#BM27C512-25
T0A4555-V8


CXK5814P-45L



CXK5864BM-12L

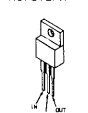

CXZ3065A
LA7016

CX-7916
LM6364N
RC455BP
TL082CP
#PC318C
#PC358C
#PC355C
#B14C
#PC814G2-1

HD10124
HD14052BP
HD14053BFP
HD14538BFP
HD14538BP
#14572UBCP
#B4051E
#C74HC4538N
SN74S124N
TS4040BP
TC4053BP

#C1495L
TC74HC00P
#PC1394C

#C74F00M
SN74HC107WS
TC74HC00F

MSF78M12
RC7812FA


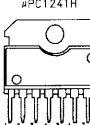
NJM79L12A


SN74HC244NS
TC74HC244P

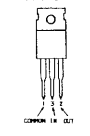

TC74HC123F



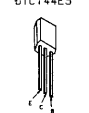
#PC1241H


#PC39802
#PC45802


#PC7912H


25A1156
25A1381
25A1407
25B882

0TA124EK
0TC114EK
0TC124EK
0TC144EK
25A1462
25C1162-YG
25C1621
25C2712
25C2855-Y
25C3545

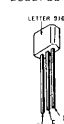
0TA124ES
0TC114ES
0TC124ES
0TC144ES

FM51
FM52
FMW8

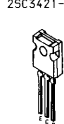
FMW1
FMW2


TMX2



25A1441


25A1175
25C2785

25A1208
25C2910

25A1358-Y
25C3421-Y


25A1428Y



25C2555


25B733
S8734
25B734-34
25B774-34


25B798


25B861
25C3150
25C3675
25B1138
25B982

25B1315
25B1977


25C2555



25C4053S


25C24R8-LK
25B882

25C3042
25K827


25C3209LLK



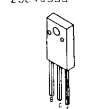
25C3668-Y



25C3998



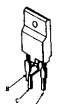
25C4053S



25D1403



25D1548



25D783-4



25K160-K6



25K422


25K523-L1
25K523-M1


25K755



25K817



25K929



25J143



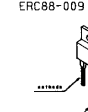
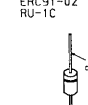
#650R


25K523-L1
25K523-M1

ERA22-06
ERB43-08
ERC34-06
1S983
10E-1

ERC6-155A
GH-3F
U056
V09G
V11N


ERC88-009


ERC91-02
RU-1C


#650R


ER629-08J
ER633-02


ESAD39-06



FMG-24R


FMG-24S
FML-22S

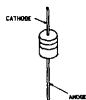

FML-22R



#A152WK



FML-32S


RD10E5-B2
RD12E5-B3
RD15E5-B2
RD15E5-B2
RD18E5-B1
RD2.0E5-B2
RD20E5-B2
RD3.3E5-B2
RD39E5-B1
RD39E5-B2
RD5.1E5-B1
RD5.1B5-B2
RD5.6E5-B2
RD6.2E5-B2
RD6.8E5-B2
RD8.2E5-B2
ISS119
ISS120

RD10M-B2
RD12M-B2
RD13M-B2
RD3.3M-B1
RD3.6-B1
RD3.6M-B1
RD5.1M-B2
RD6.2M-B1
ISS193


S15VB60



ISS22A



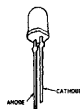
152836



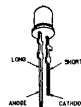
11EQS04


GL-3EGB
SLP28168
TLR123


5E303AY



SLH-34MC3



SLP-34MC3



SLP144B



TLR214

