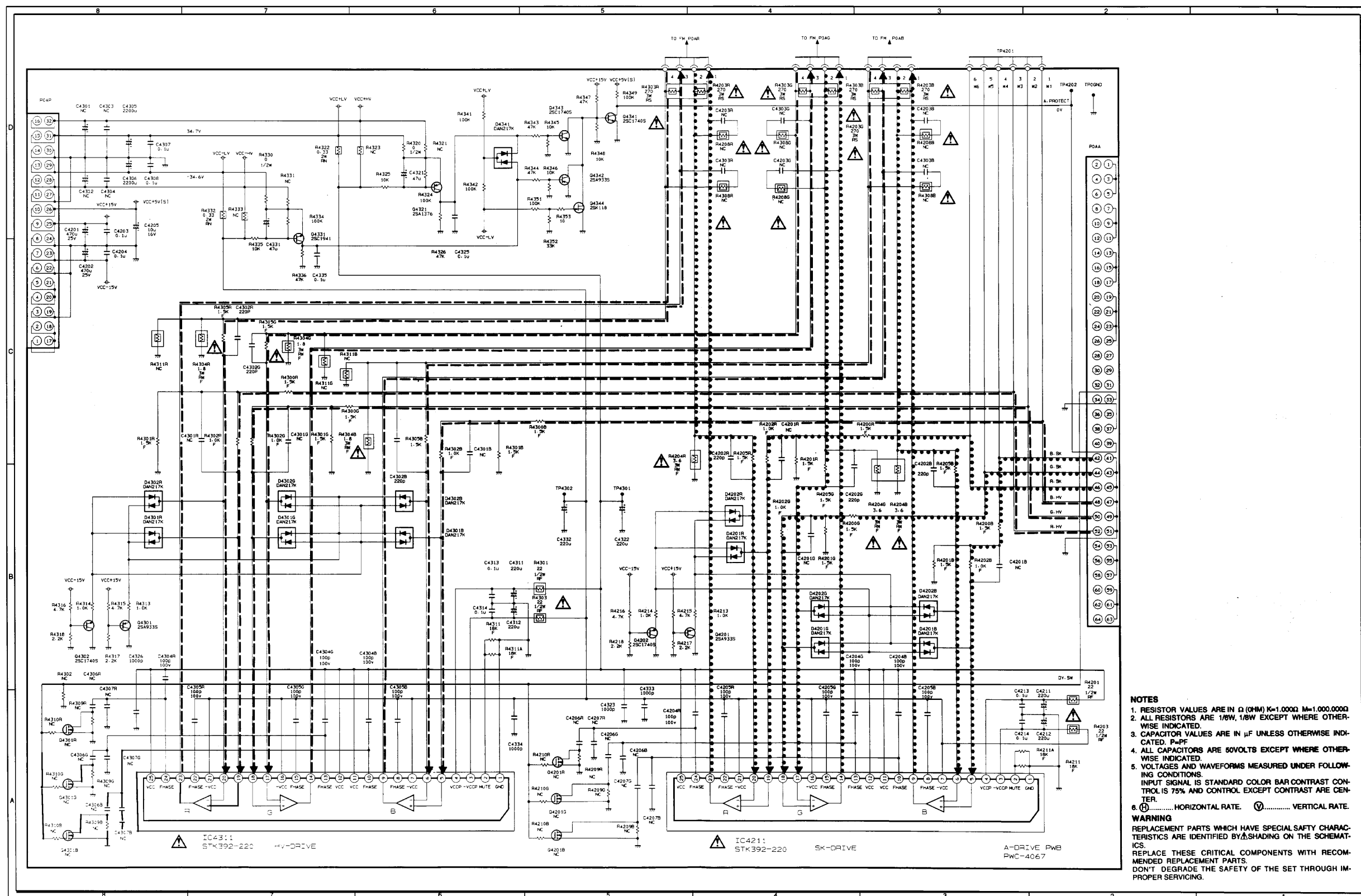


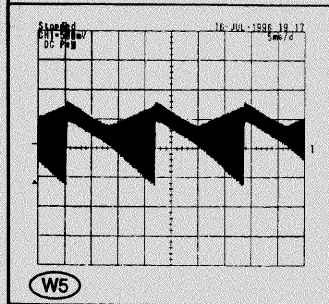
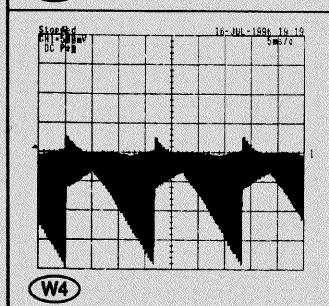
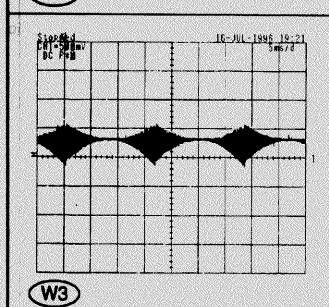
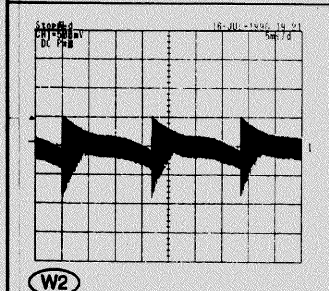
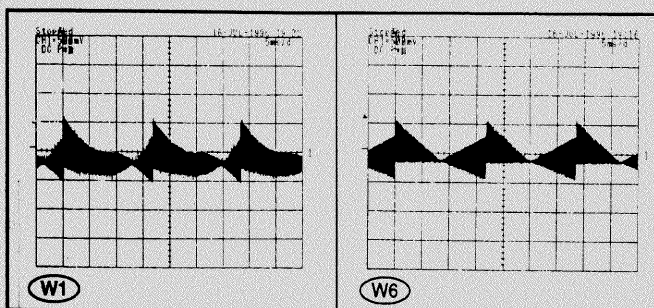


A-DRIVE PWB (PWC-4067)

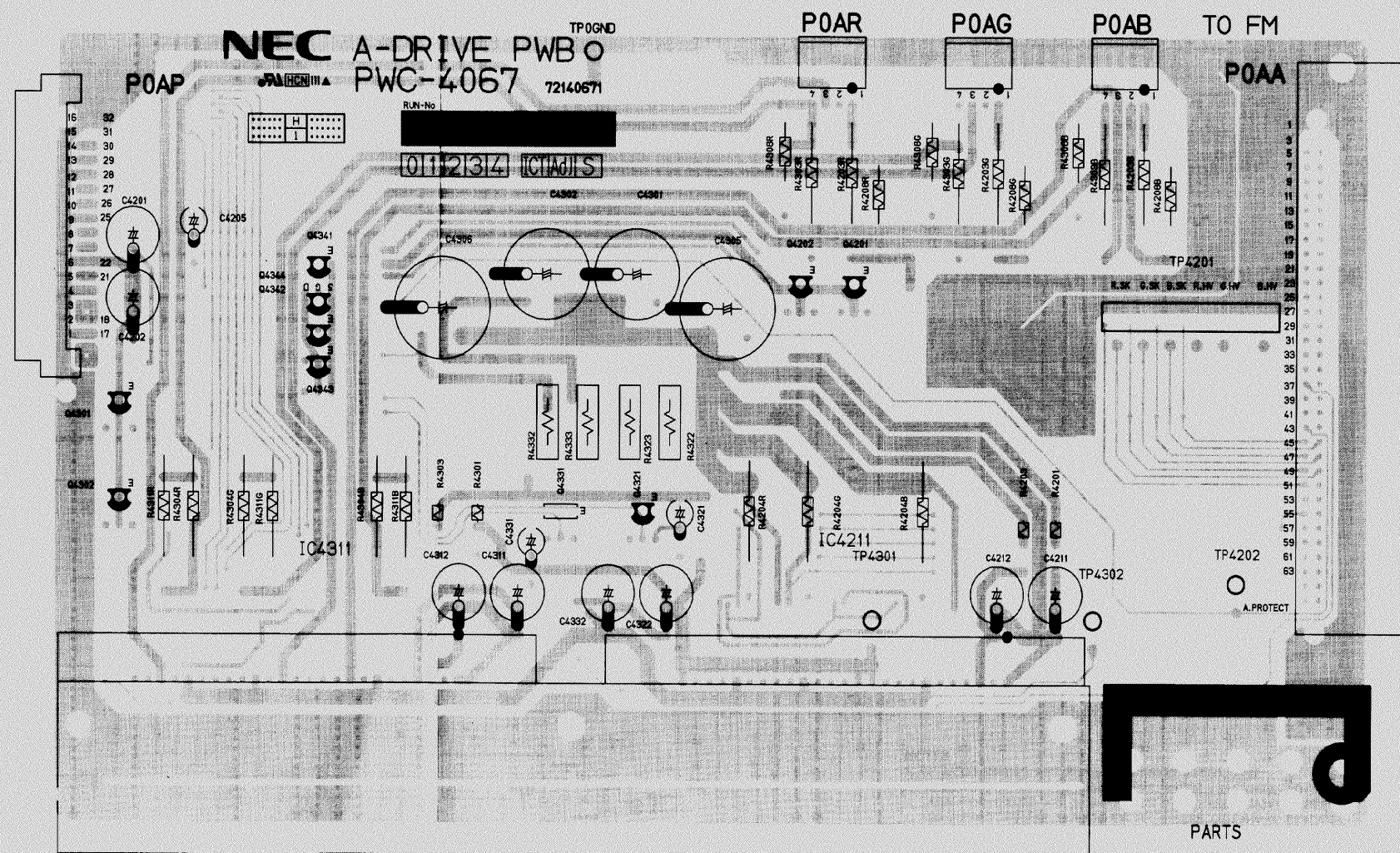


- ## NOTES
1. RESISTOR VALUES ARE IN Ω (OHM) $K=1,000$, $M=1,000,000$
 2. ALL RESISTORS ARE 1/8W, 1/8W EXCEPT WHERE OTHERWISE INDICATED.
 3. CAPACITOR VALUES ARE IN μF UNLESS OTHERWISE INDICATED. $P=pPF$
 4. ALL CAPACITORS ARE 50VOLTS EXCEPT WHERE OTHERWISE INDICATED.
 5. TUNING AND WAVEFORMS MEASURED UNDER FOLLOWING CONDITIONS:
INPUT SIGNAL IS STANDARD COLOR BAR CONTRAST CONTROL IS 75% AND CONTROL EXCEPT CONTRAST ARE CENTER.
 6. ..... HORIZONTAL RATE. ..... VERTICAL RATE.
- ## WARNING
- REPLACEMENT PARTS WHICH HAVE SPECIAL SAFETY CHARACTERISTICS ARE IDENTIFIED BY SHADING ON THE SCHEMATICS.
- REPLACE THESE CRITICAL COMPONENTS WITH RECOMMENDED REPLACEMENT PARTS.
- DON'T DEGRADE THE SAFETY OF THE SET THROUGH IMPROPER SERVICING.

A-DRIVE PWB (PWC-4067) WAVE FORM



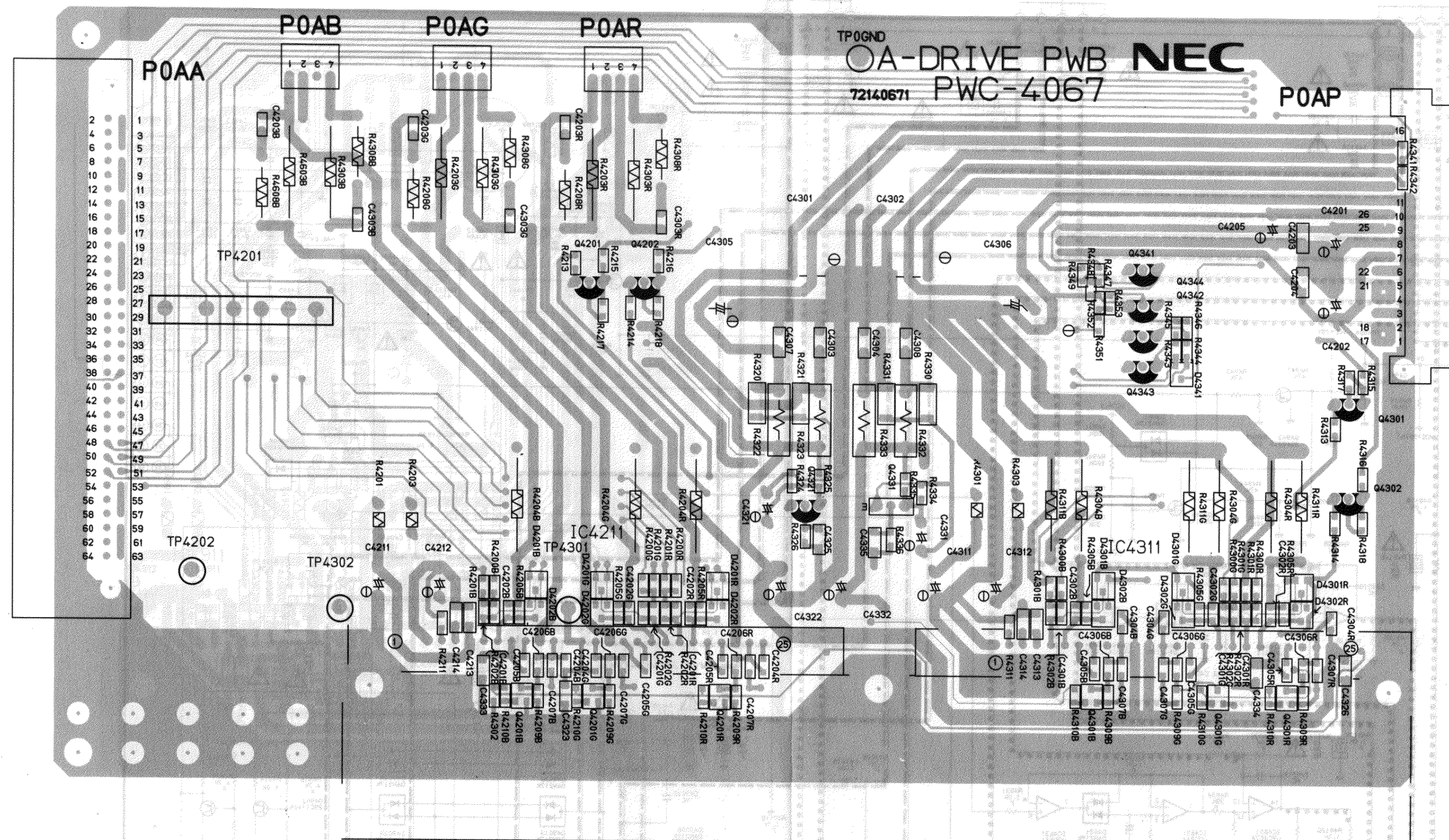
A-DRIVE PWB (PWC-4067) PARTS SIDE



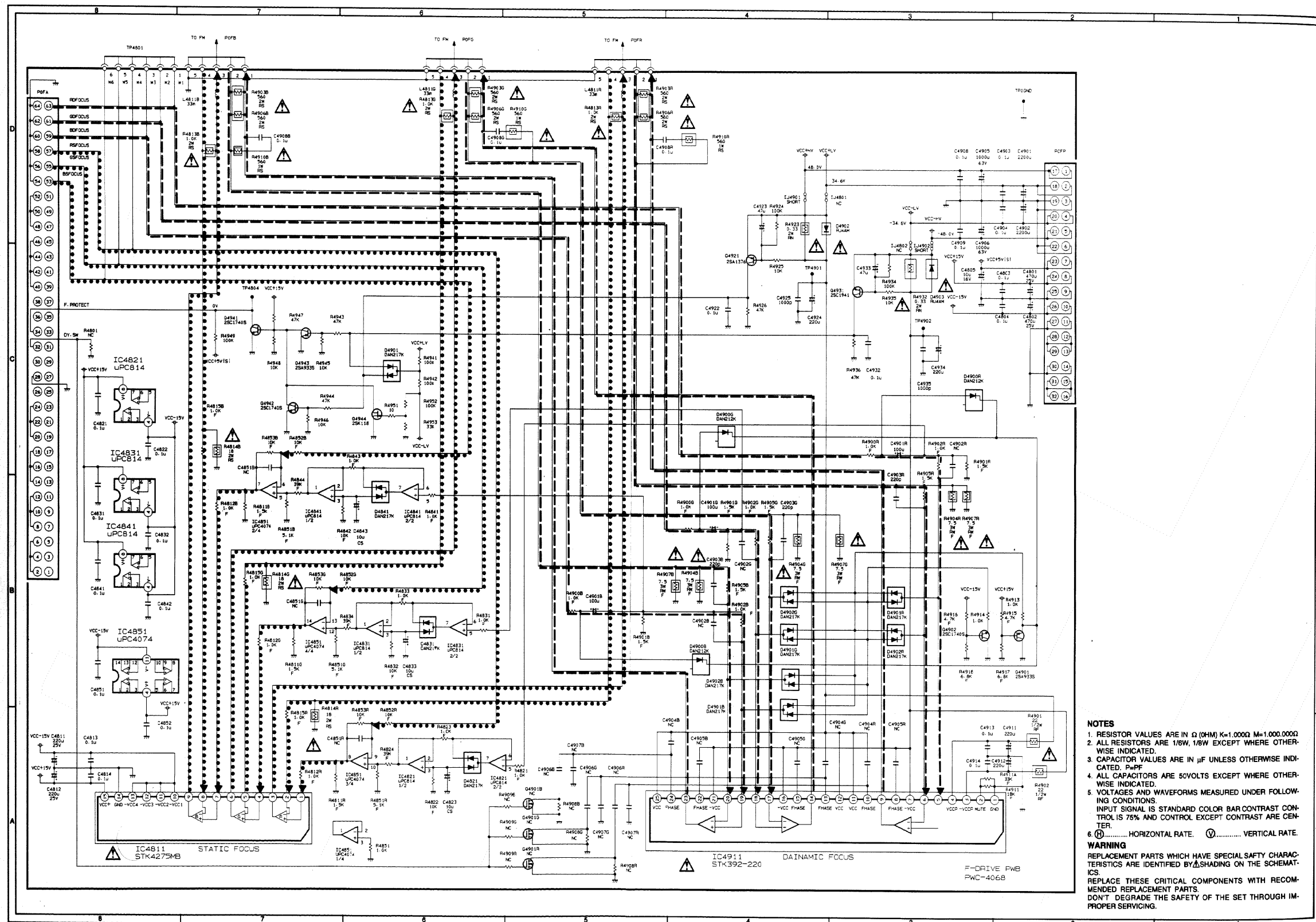
A-DRIVE PWB (PWC-4067)

SOLDER SIDE

7-DIVIDE BY 9 AND ROUND UP



F-DRIVE PWB (PWC-4068)

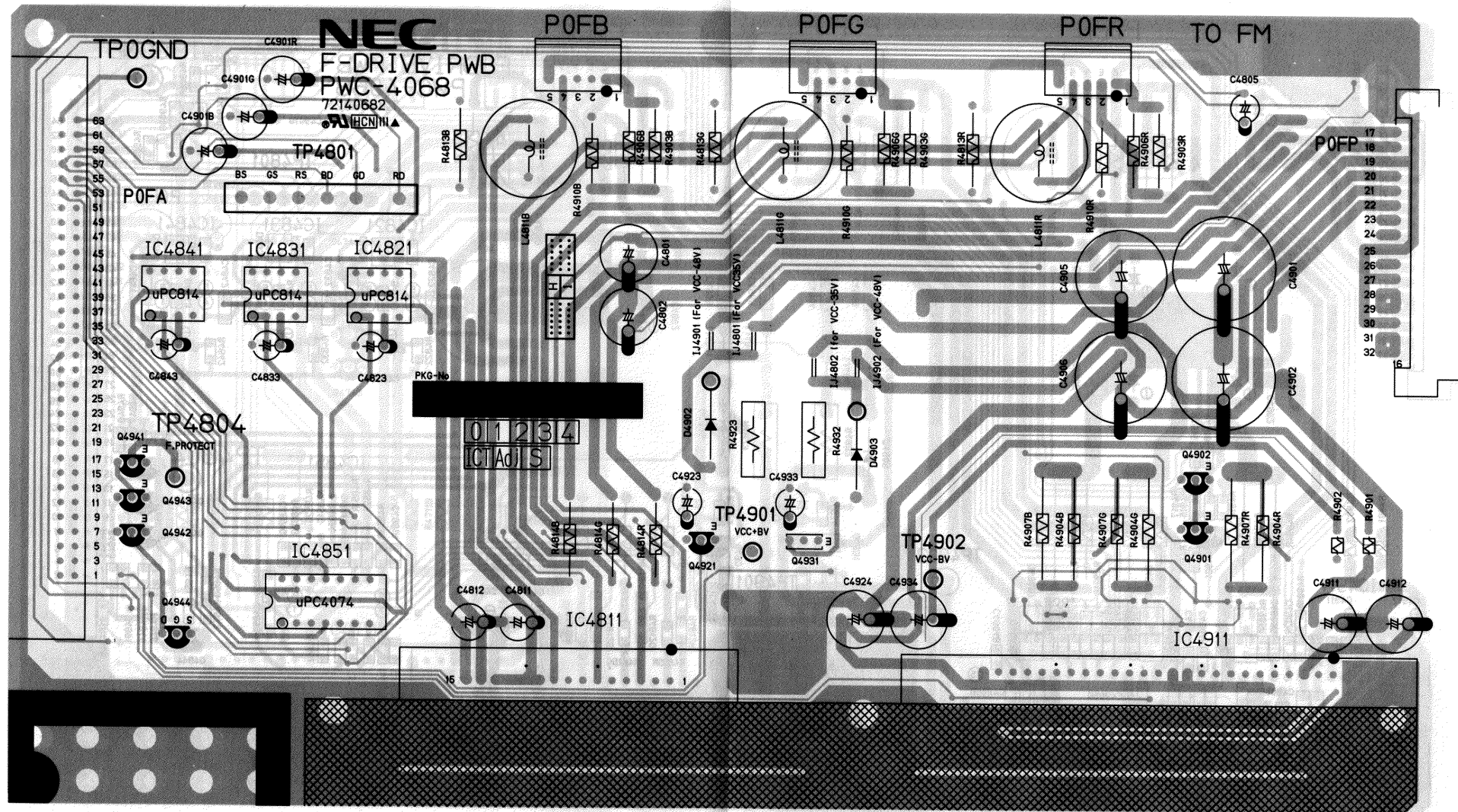


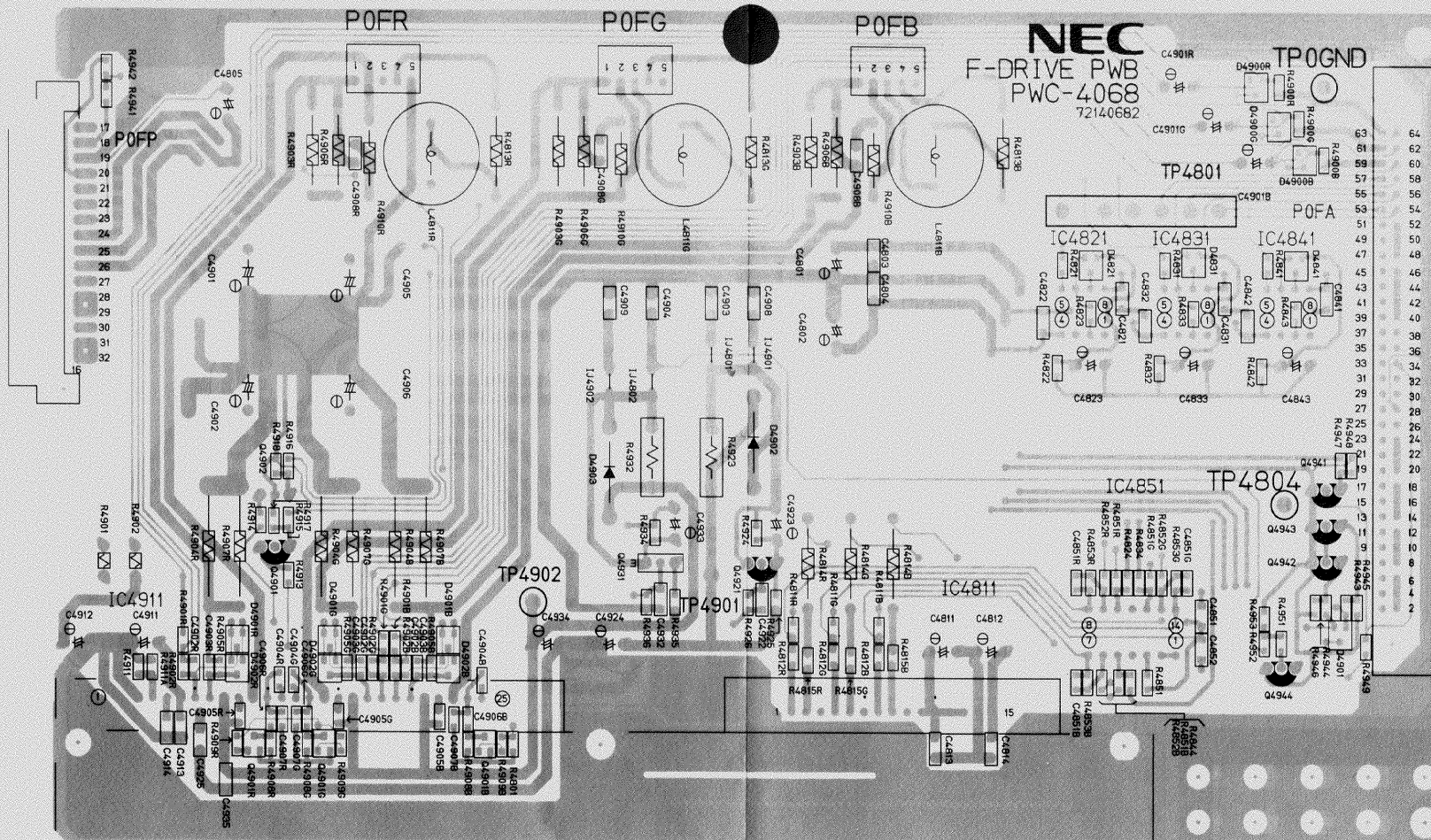
F-DRIVE PWB (PWC-4068) (4066)

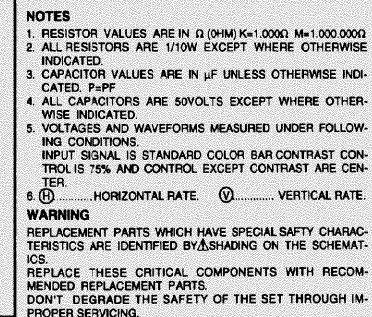
PARTS SIDE

F-DRIVE PWB (PWC-4068)

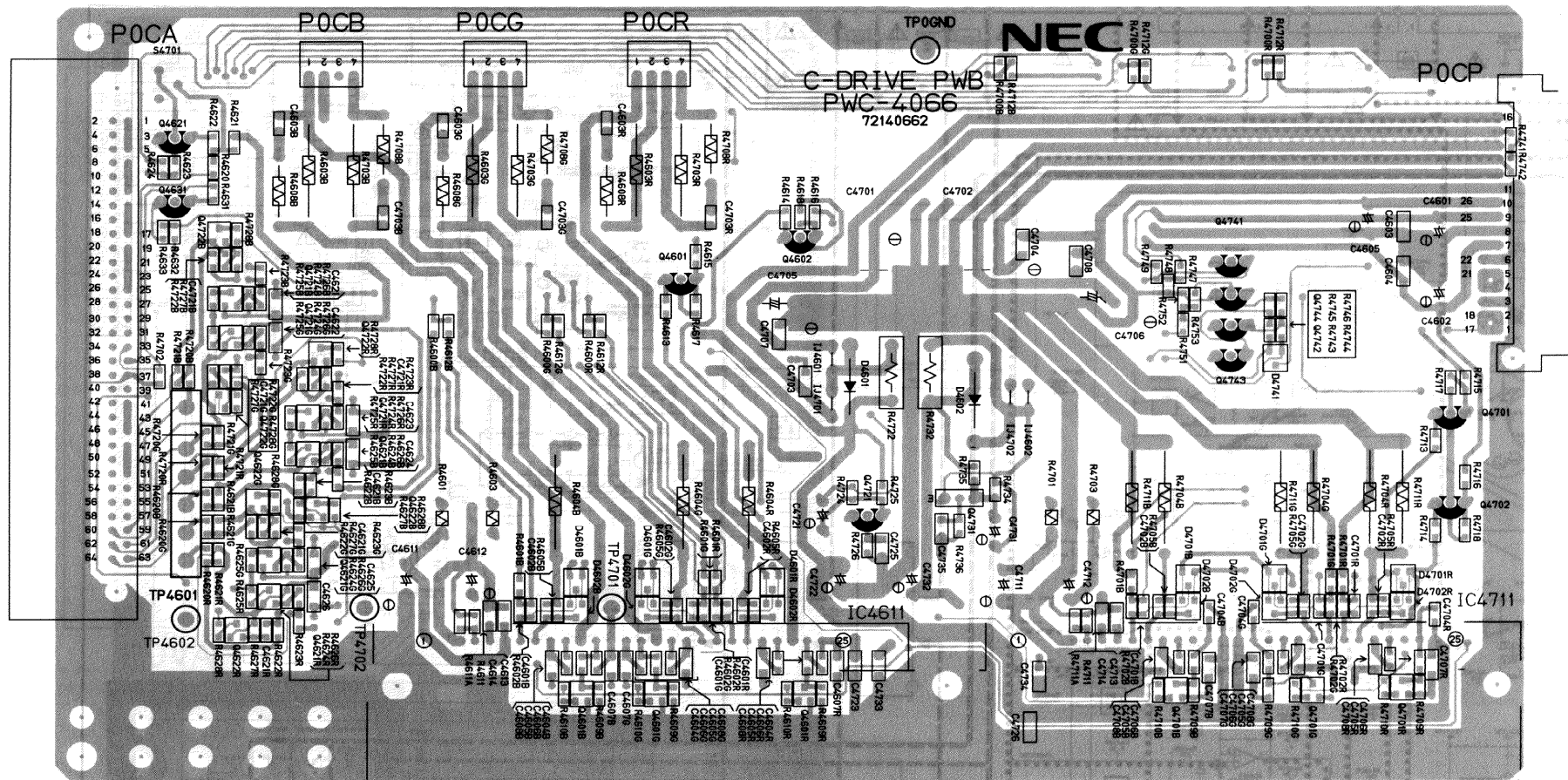
SOLDER SIDE



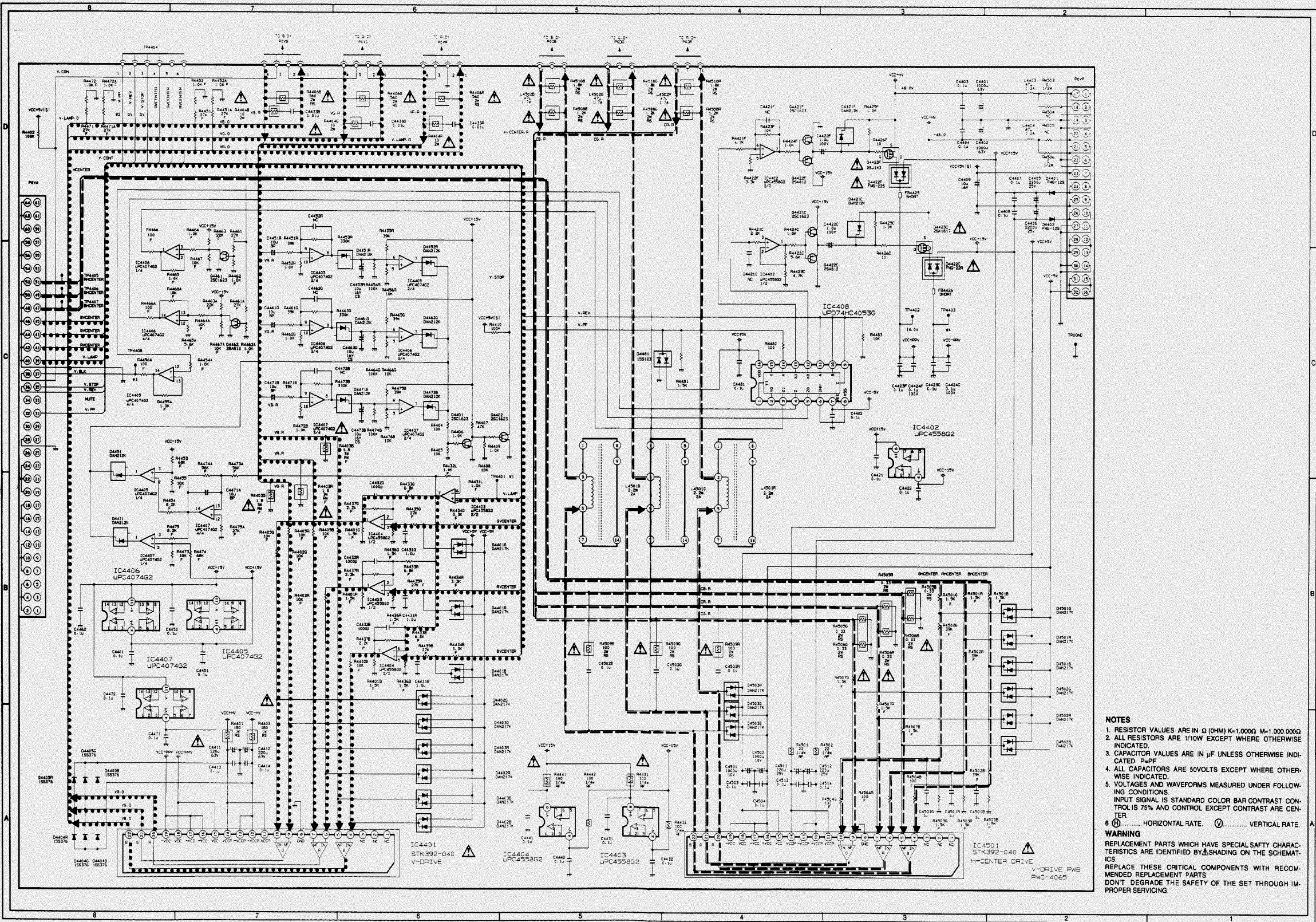
F-DRIVE PWB (PWC-4068)
SOLDER SIDE








V-DRIVE PWB (PWC-4065)



NOTES

1. RESISTOR VALUES ARE IN Ω (OHM) K=1,000 M=1,000,000
2. ALL RESISTORS ARE 1/10W EXCEPT WHERE OTHERWISE INDICATED.
3. CAPACITOR VALUES ARE IN μ F UNLESS OTHERWISE INDICATED. P=PF
4. ALL CAPACITORS ARE 50VOLTS EXCEPT WHERE OTHERWISE INDICATED.
5. VOLTAGES AND WAVEFORMS MEASURED UNDER FOLLOWING CONDITIONS:
INPUT SIGNAL IS STANDARD COLOR BAR CONTRAST CONTROL IS 75% AND CONTROL EXCEPT CONTRAST IS CENTER.
6. H HORIZONTAL RATE. V VERTICAL RATE.

WARNING

REPLACEMENT PARTS WHICH HAVE SPECIAL SAFETY CHARACTERISTICS ARE IDENTIFIED BY SHADING ON THE SCHEMATICS.

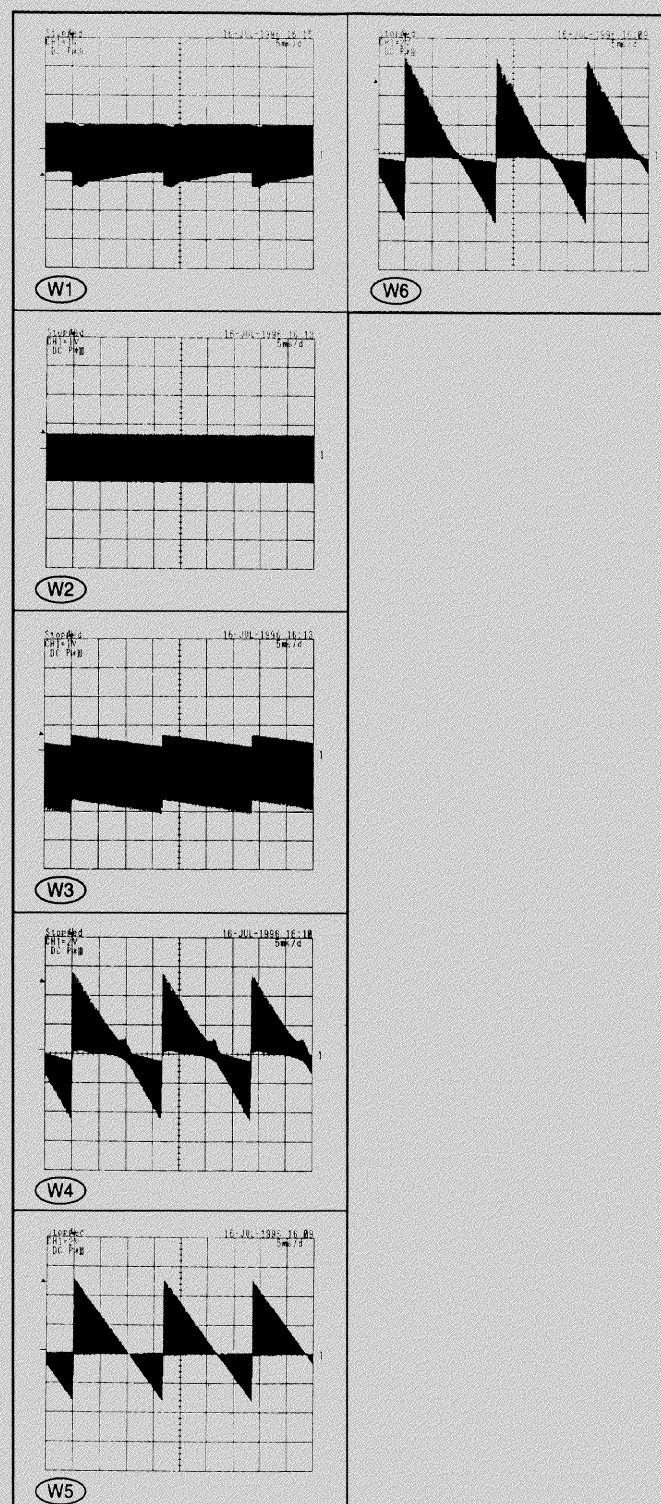
REPLACE THESE CRITICAL COMPONENTS WITH RECOMMENDED REPLACEMENT PARTS.

DON'T DEGRADE THE SAFETY OF THE SET THROUGH IMPROPER SERVICING.

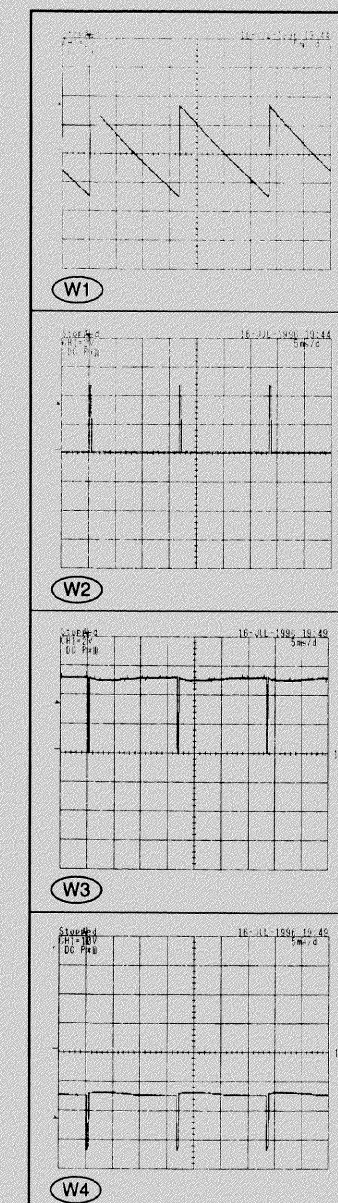
F-DRIVE PWB (PWC-4068) WAVE FORM



C-DRIVE PWB (PWC-4066) WAVE FORM



V-DRIVE PWB (PWC-4065) WAVE FORM



SOLDER SIDE

H-DEF PWB (PWC-4069) (1/2)

